

Écologies collectives
de l'espace urbain /
Collective Ecologies
of Urban Spaces

CCA

MAKING MAMAK

~S8

Section 8:
Appendice / Appendix

Pranti Cleaner

Pranti Pusing
Sally Cave bought for us

DU
Pusat Budaya

Students UNITAR UMS

Name, Amey
works at NXG, are dating RT for lunch.

DR. NVA

JARED

Universiti Malaysia Sabah

1 Borneo Mall

Jalan UMS

1 Borneo Mall

1 Borneo Mall

Community

Hanne Theme Photo Studio

Hotel Cafe

Students Mall

Resident Shoplist (cont)

Aty Dig Photography

Name, Muzpuz
in a nearby mall. RT. I offer events

Midnight Panshion Centre (Creative market)

Art Cafe
MALL
BIGS CAFE

COFFEE EXHIBITION

Nas. Program

ART Exhibition
Lunch Time
Order



Appendice / Appendix

(1)



Ruang Tamu Ekosistem

Plan du quartier

[1] Comment avez-vous appris à connaître votre quartier?

[2] Qui souhaitez-vous rencontrer dans votre quartier?

[3] Pourquoi les gens viennent-ils dans votre espace?

/

Neighbourhood Plan

[1] How did you get to know your neighbourhood?

[2] Who do you want to know in your neighbourhood?

[3] Why do they come to your space?



RT EVENT SETAP
i. Tables
ii. Chaises
iii. MAT
iv. SCREEN

MAKING MAMAK

Appendice / Appendix

(2)

Ruang Tamu Ekosistem

Plan

[1]
Développez un programme :

-Vous pouvez indiquer des détails
spécifiques et écrire des histoires

-Quels changements permanents
avez-vous effectués?

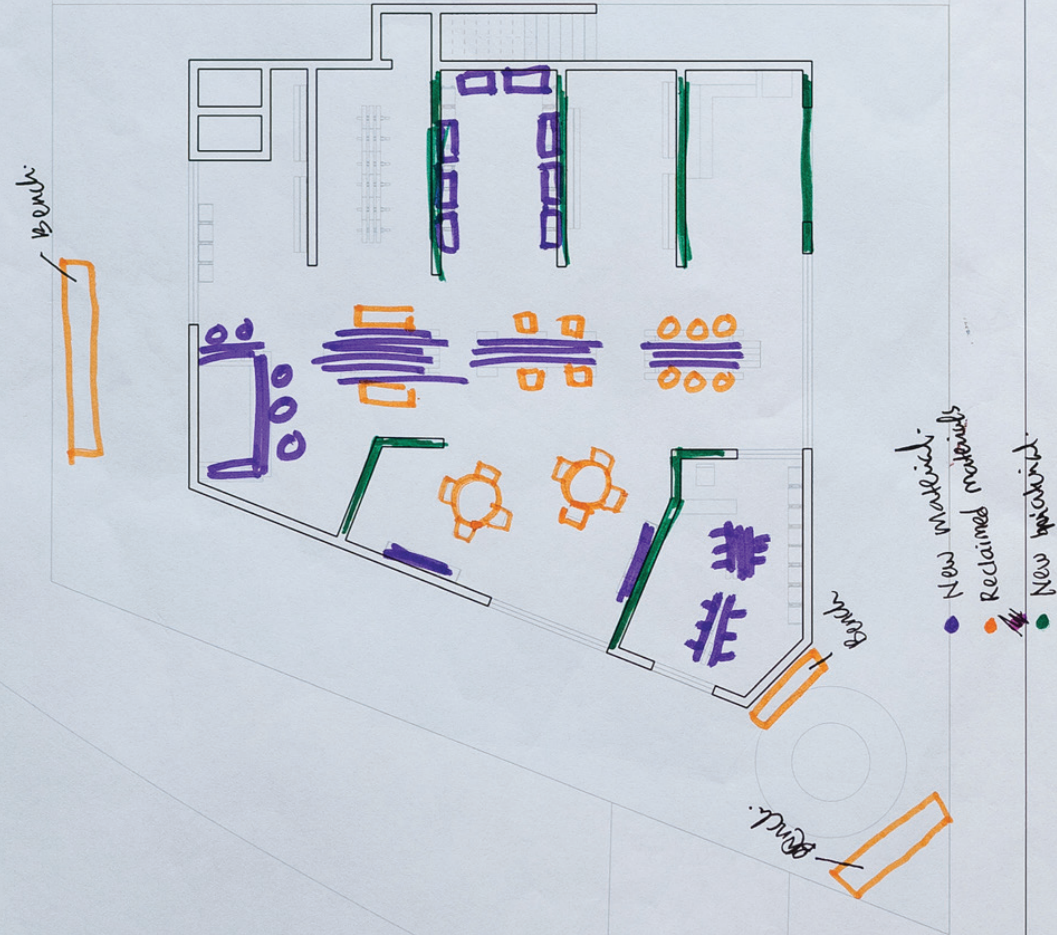
/

Floor Plan

[1]
Draw out a programme:

- You can indicate specific details
and write stories

- What permanent changes did
you do?



Ruang Tamu Ekosistem

Plan

[1] Indique les matériaux recyclés et neufs

Floor Plan

[1] Indicate Recalimed vs New Material

-- COLLECTIVE NAME --

RUANG TAMU EKOSISTEM

ART COMMUNITY SPACE.

- COLLECTIVE MEMBERS -

PANGROK SUTAP

KAMBARI

HAYI

HENNA SARIK

EARTH PRINT

• BORNEO KOMRAD

• THE DELI-DELI CAFE

• NO SOLUCION

• ANAK

Kesulitan



EMERGENCY



BATHROOM

COMMUNITY SPACE



HANGING OUT



ART



DI - NANA - MEMETO - RIZO - BANI - AWANG - IAN - RRAY - SABIR - UTO - MUKMIN
JIB - STAFIQ - MIEUL - PIPA - MAMINK - SAFWAN - ATEA - AMAT - JIB - ABUS -
EYEN KHOO -

MAKING MAMAK

Appendice / Appendix

(4)

Ruang Tamu Ekosistem

Diagramme du collectif /
Collective Diagram



MAKING MAMAK

Appendice / Appendix

(5)

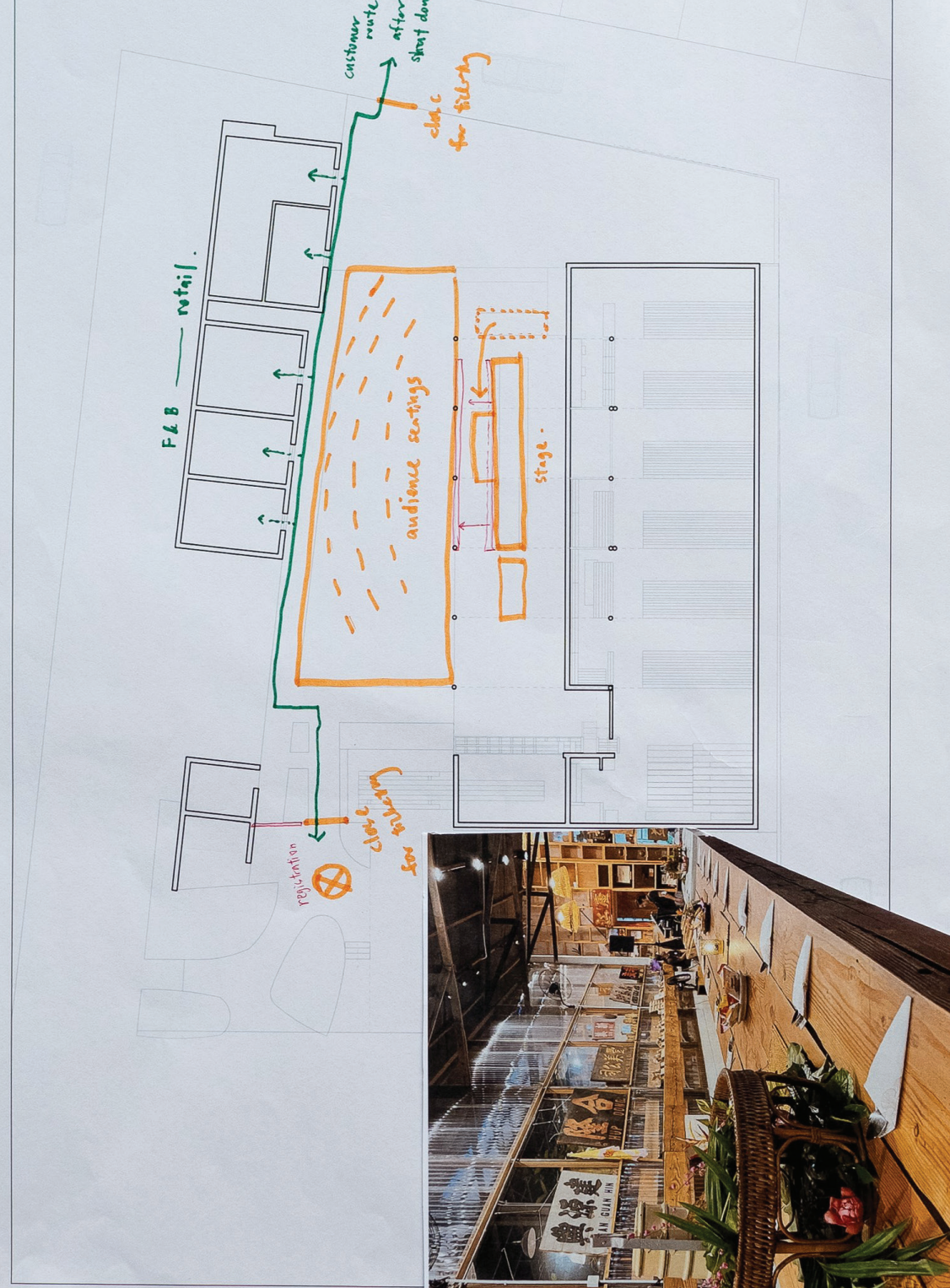
Coex @ Kilang Besi

Plan du quartier

- [1] Comment avez-vous appris à connaître votre quartier?
- [2] Qui souhaitez-vous rencontrer dans votre quartier?
- [3] Pourquoi les gens viennent-ils dans votre espace?

Neighbourhood Plan

- [1] How did you get to know your neighbourhood?
- [2] Who do you want to know in your neighbourhood?
- [3] Why do they come to your space?



MAKING MAMAK

Appendice / Appendix

(6)

●
Coex @ Kilang Besi

Plan

[1]
Développez un programme :

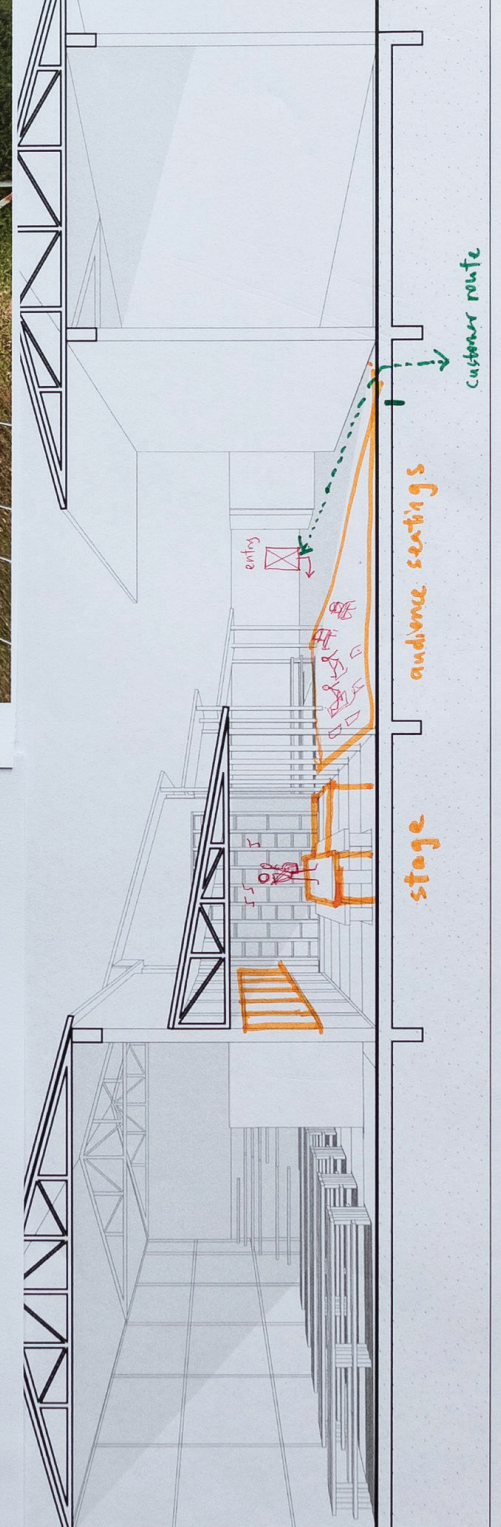
- Vous pouvez indiquer des détails spécifiques et écrire des histoires
- Quels changements permanents avez-vous effectués?

/

Floor Plan

[1]
Draw out a programme:

- You can indicate specific details and write stories
- What permanent changes did you do?



Appendice / Appendix

(7)

Coex @ Kilang Besi

Coupe transversale

[1] Développez un programme:

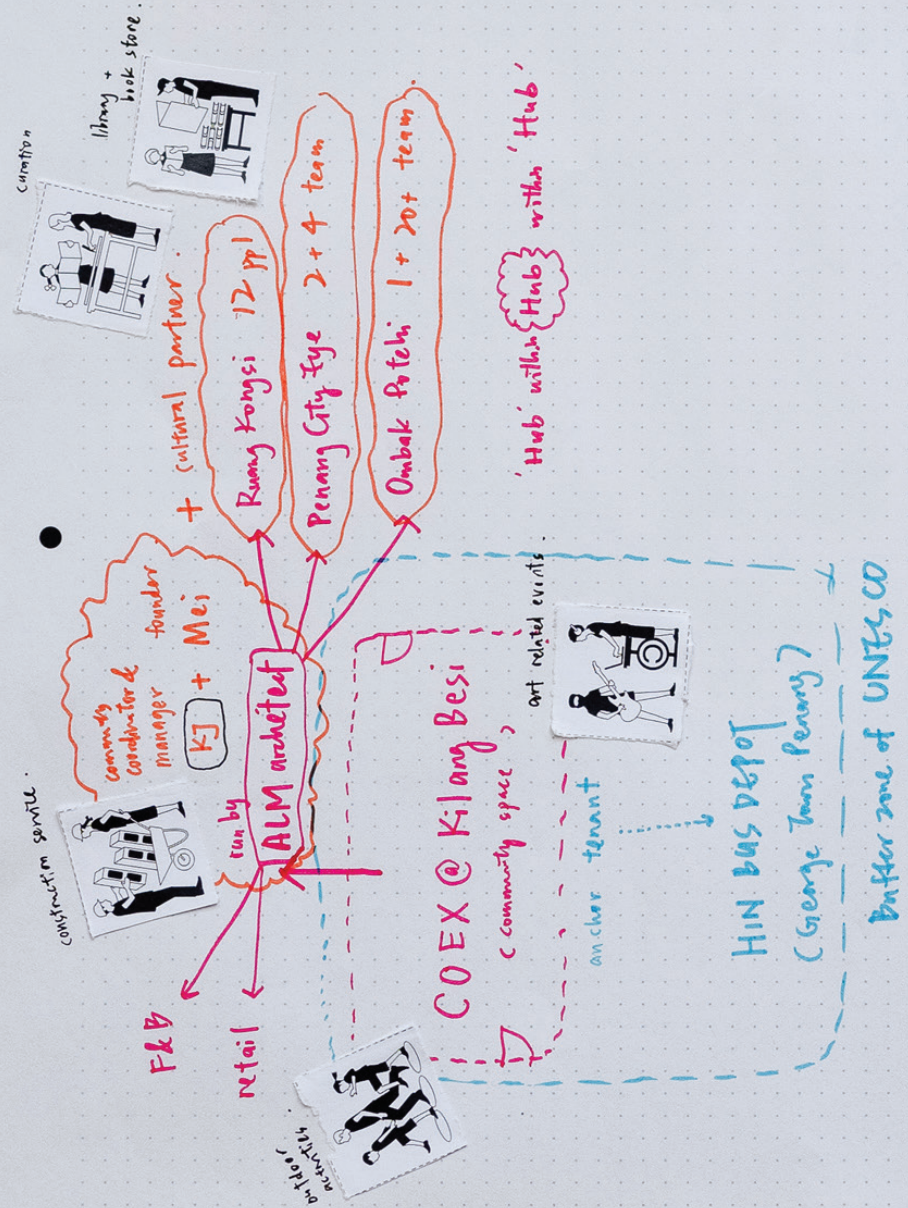
- Vous pouvez indiquer des détails spécifiques et écrire des histoires
- Quels changements permanents avez-vous effectués?

/

Sectional Perspective

[1] Draw out a programme:

- You can indicate specific details and write stories
- What permanent changes did you do?



MAKING MAMAK

Appendice / Appendix

(8)

Coex @ Kilang Besi

Diagramme du collectif /
Collective Diagram



MAKING MAMAK

Appendice / Appendix

(9)

Kapallorek Artspace

Plan du quartier

[1] Comment avez-vous appris à connaître votre quartier?

[2] Qui souhaitez-vous rencontrer dans votre quartier?

[3] Pourquoi les gens viennent-ils dans votre espace?

/

Neighbourhood Plan

[1] How did you get to know your neighbourhood?

[2] Who do you want to know in your neighbourhood?

[3] Why do they come to your space?

JEJAK SENI MALAYSIA

ANTARA 3
MEDIA ART FEST
OUT 2019
SOUND ART
PERFORMANCE
FILM
SCREENING

ANTARA 2
ART
EXHIBITION
NOV 2021

EXHIBITION PLAN

BR

OF 1

STORAGE

RESIDEN

OF 2

IF

4F

OUTDOOK

Kapallorek Artspace

1100

MURAL ART
PROJEK
'GERGASI BOTA'
JAN 2021

MAKING MAMAK

Appendice / Appendix

(10)

Kapallorek Artspace

Plan

[1] Développez un programme:

- Vous pouvez indiquer des détails spécifiques et écrire des histoires
- Quels changements permanents avez-vous effectués?

/

Floor Plan

[1] Draw out a programme:

- You can indicate specific details and write stories
- What permanent changes did you do?





Kapallorek Artspace

Coupe transversale

[1] Développez un programme:

- Vous pouvez indiquer des détails spécifiques et écrire des histoires
- Quels changements permanents avez-vous effectués?

/

Sectional Perspective

[1] Draw out a programme

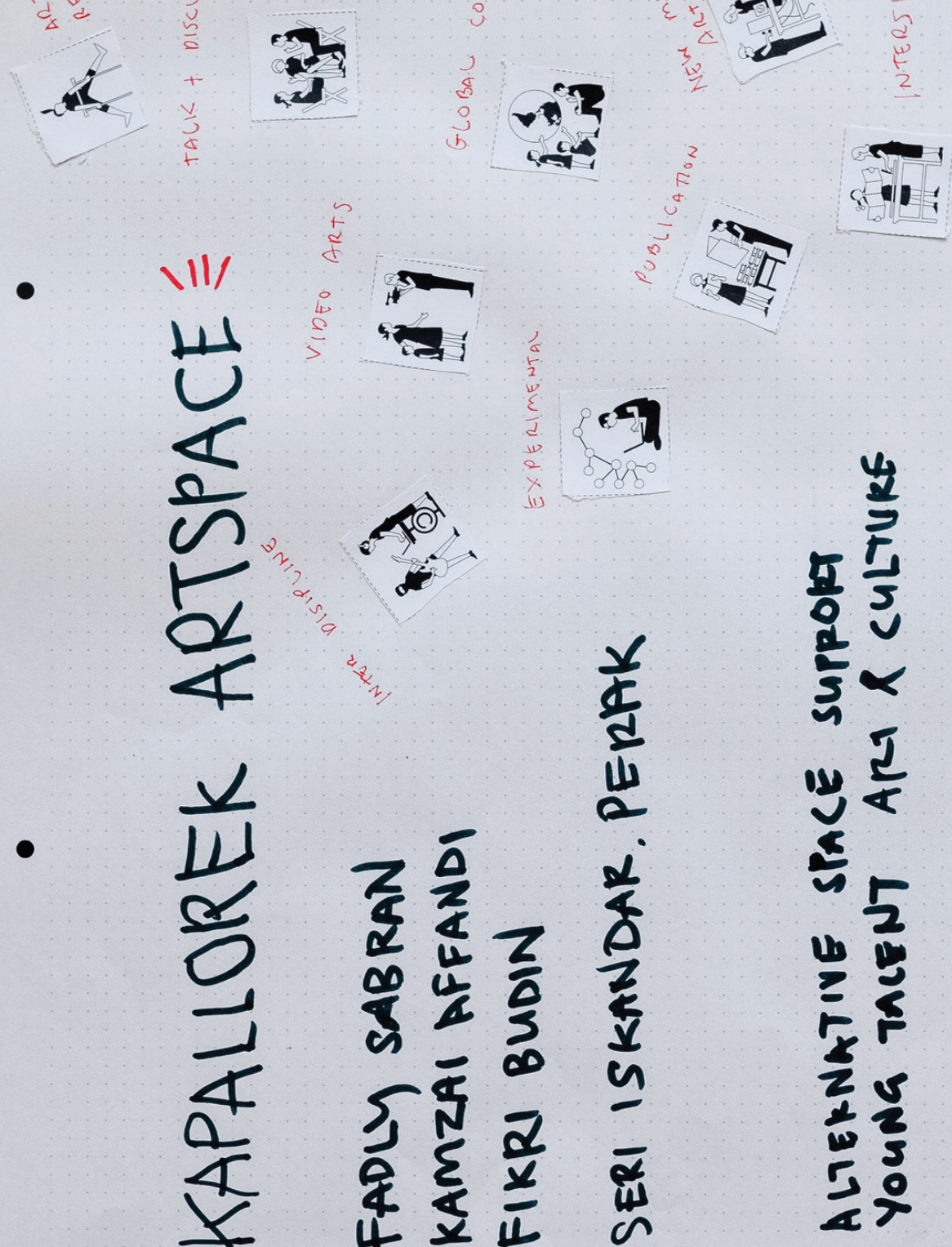
- You can indicate specific details and write stories
- What permanent changes did you do?

KAPALLOREK ARTSPACE

FADLY SABRAN
KAMZAI AFFANDI
FIKRI BUDIN

SERI ISKANDAR. PERAK

ALTERNATIVE SPACE SUPPORT
YOUNG TALENT ART & CULTURE



MAKING MAMAK

Appendice / Appendix

(12)

 Kapallorek Artspace

Diagramme du collectif /
Collective Diagram



Appendice / Appendix

(13)

● Little Giraffe Story House

Plan du quartier

[1] Comment avez-vous appris à connaître votre quartier?

[2] Qui souhaitez-vous rencontrer dans votre quartier?

[3] Pourquoi les gens viennent-ils dans votre espace?

/

Neighbourhood Plan

[1] How did you get to know your neighbourhood?

[2] Who do you want to know in your neighbourhood?

[3] Why do they come to your space?



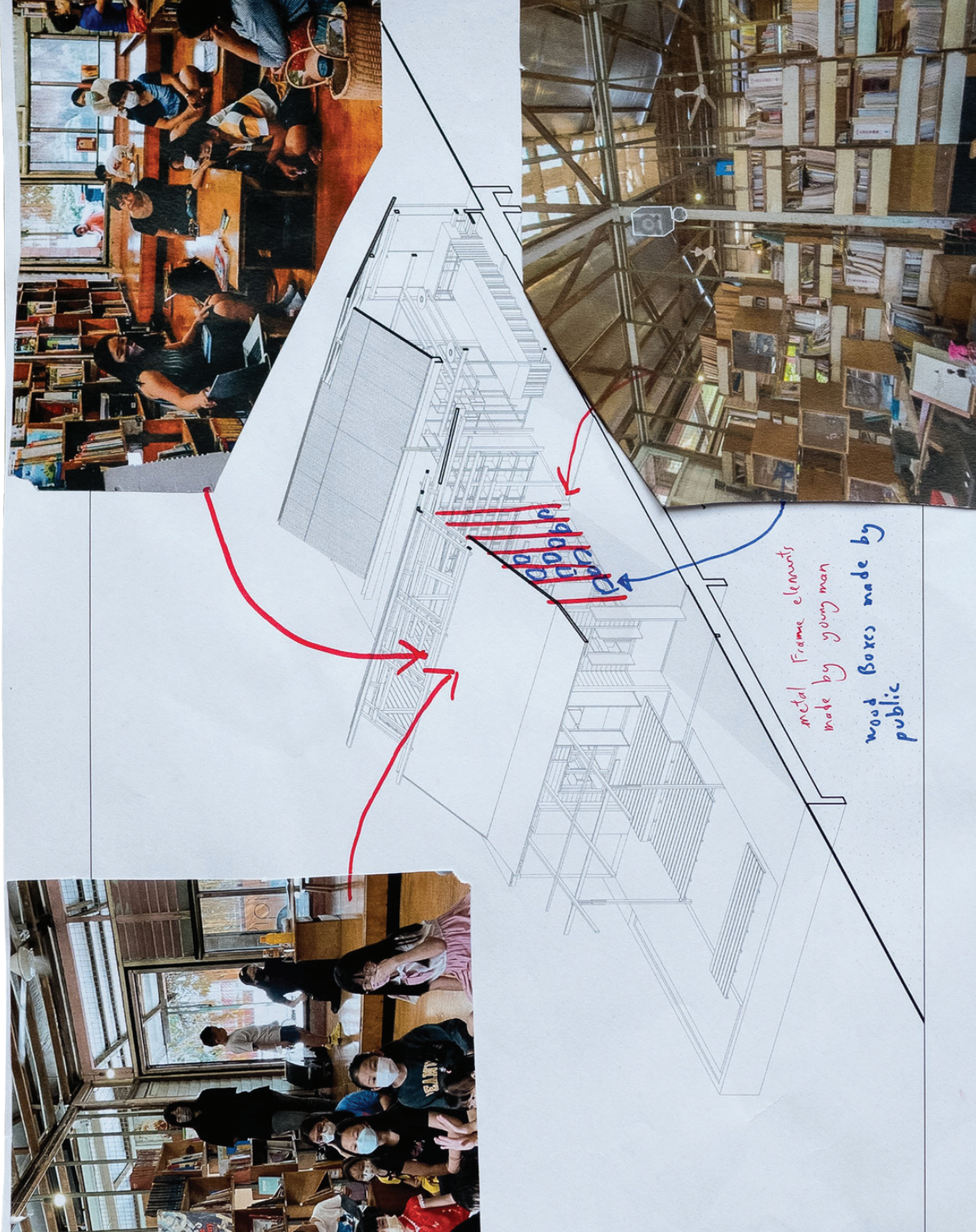
**MAKING
MAMAK**

Appendice / Appendix

(14)

● **Little Giraffe Story House**

- Plan
- [1] Nouveaux et anciens usages de l'espace
- /
- Floor Plan
- [1] New use vs Old use



● Little Giraffe Story House

Diagramme axonométrique

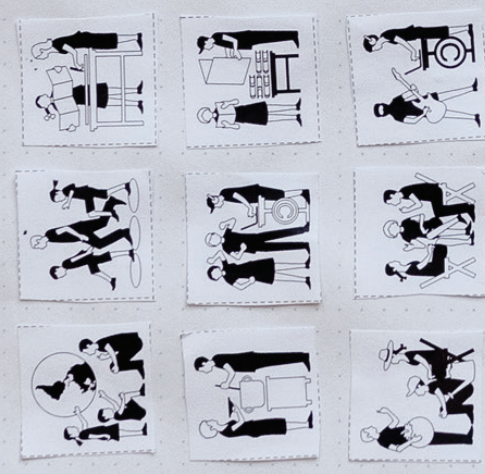
[1]
Qui a effectué la rénovation?

/

Axometric Diagram

[1]
Who is it constructed the renovation?

Members:
• Soonyong
• Emma
• BK
• Chinlee
• ~~We are community~~
#ibony



We are a platform for
Sharing and inspiring and gathering

MAKING MAMAK

Appendice / Appendix

(16)

● Little Giraffe Story House

Diagramme du collectif /
Collective Diagram



● We should have a center for culture & Artworks

● We have made this when we started the renovation by PS for restaurant couple!
● The renovation during the renovation process is very important
● We have made this when we started the renovation by PS for restaurant couple!

● People Activity
● We want to see what residents want to do this activity during the renovation process. People are important.
● The main thing is...

● A turning point of our neighborhood is when we started the renovation by PS for restaurant couple!

● Indian Lady
● We want our new house next door during the renovation process. More issues at the end will have!

● We have made this when we started the renovation by PS for restaurant couple!

● Our audience is outside our neighborhood. They are always coming to our event. We should have more people at our event.
● We should have more people at our event.

● We should have a center for culture & Artworks

● We should have a center for culture & Artworks

● Camera... they need... company...
● We should have a center for culture & Artworks

How do they come to your space?

What event do they do?

MAKING MAMAK

Appendice / Appendix

(17)

Papan Haus

Plan du quartier

[1] Comment avez-vous appris à connaître votre quartier?

[2] Qui souhaitez-vous rencontrer dans votre quartier?

[3] Pourquoi les gens viennent-ils dans votre espace?

/

Neighbourhood Plan

[1] How did you get to know your neighbourhood?

[2] Who do you want to know in your neighbourhood?

[3] Why do they come to your space?



PAPAN HAUS - LAI NUNG SANG ART EXHIBITION 2023

MAKING MAMAK

Appendice / Appendix

(18)

Papan Haus

Vue en coupe

[1]
Développez un programme:

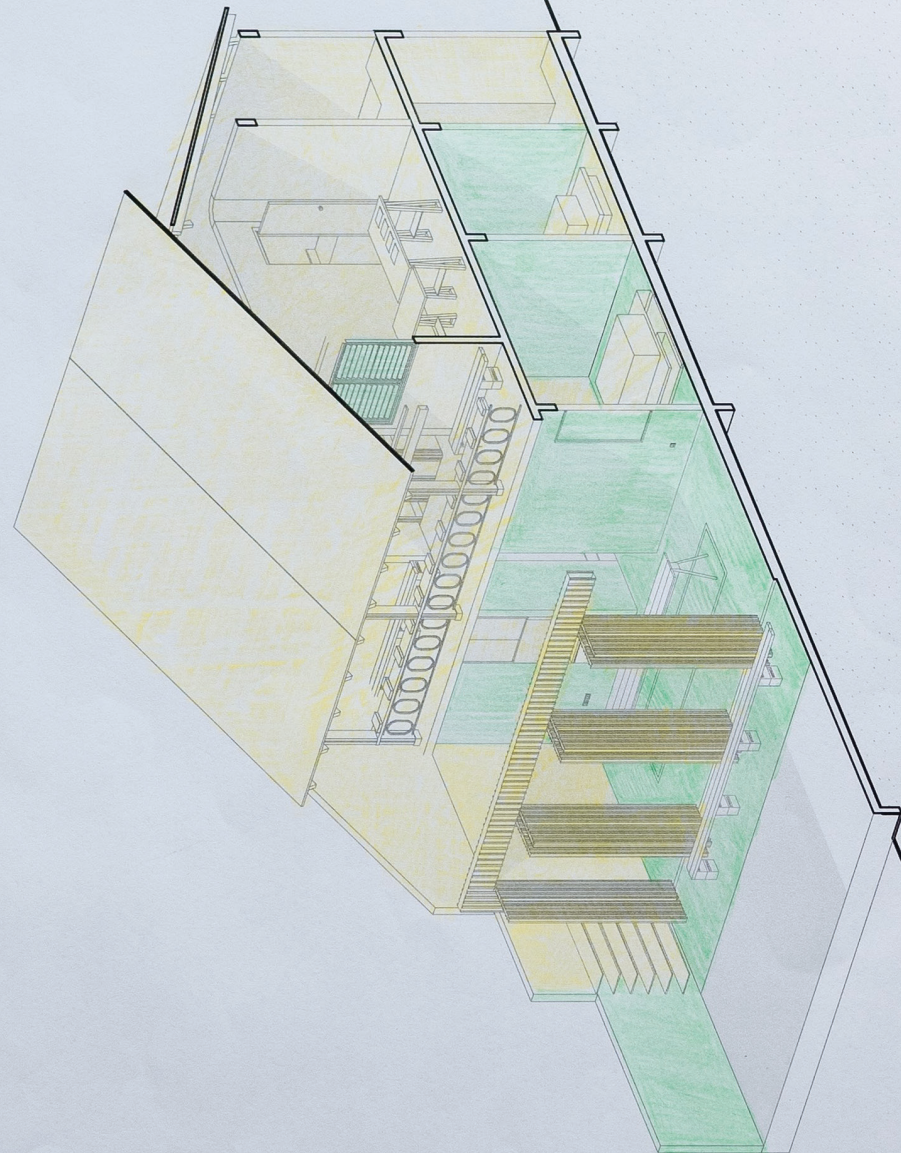
- Vous pouvez indiquer des détails spécifiques et écrire des histoires
- Quels changements permanents avez-vous effectués?

/

Section

[1]
Draw out a programme:

- You can indicate specific details and write stories
- What permanent changes did you do?



RECLAIMED MATERIAL
NEW MATERIAL

Papan Haus

Diagramme axonométrique

[1] Indiquez les matériaux récupérés vs nouveaux

Axometric Diagram

[1] Indicate Reclaimed vs New Material

八板 HAUS •



PAM

TATA

CHONGKONG

SUK TAI

KHOO

ERIC CHOW

SIEW KIEN

WONG

PAPAN HAUS IS A PLAY GROUND
FOR THE 8 MEMBERS AND A MEZTIAN
POT TO CROSS GENERATIONS, RACIAL
AND DISCIPLINE.

- PHOTO SHOOT
- SCREENING
- WORKSHOP
- EXHIBITION
- PRODUCT LAUNCH
- GATHERING
- HARI RAYA OPEN HOUSE
- RESIDENCY
- PERFORMANCE
- WEDDING PARTY



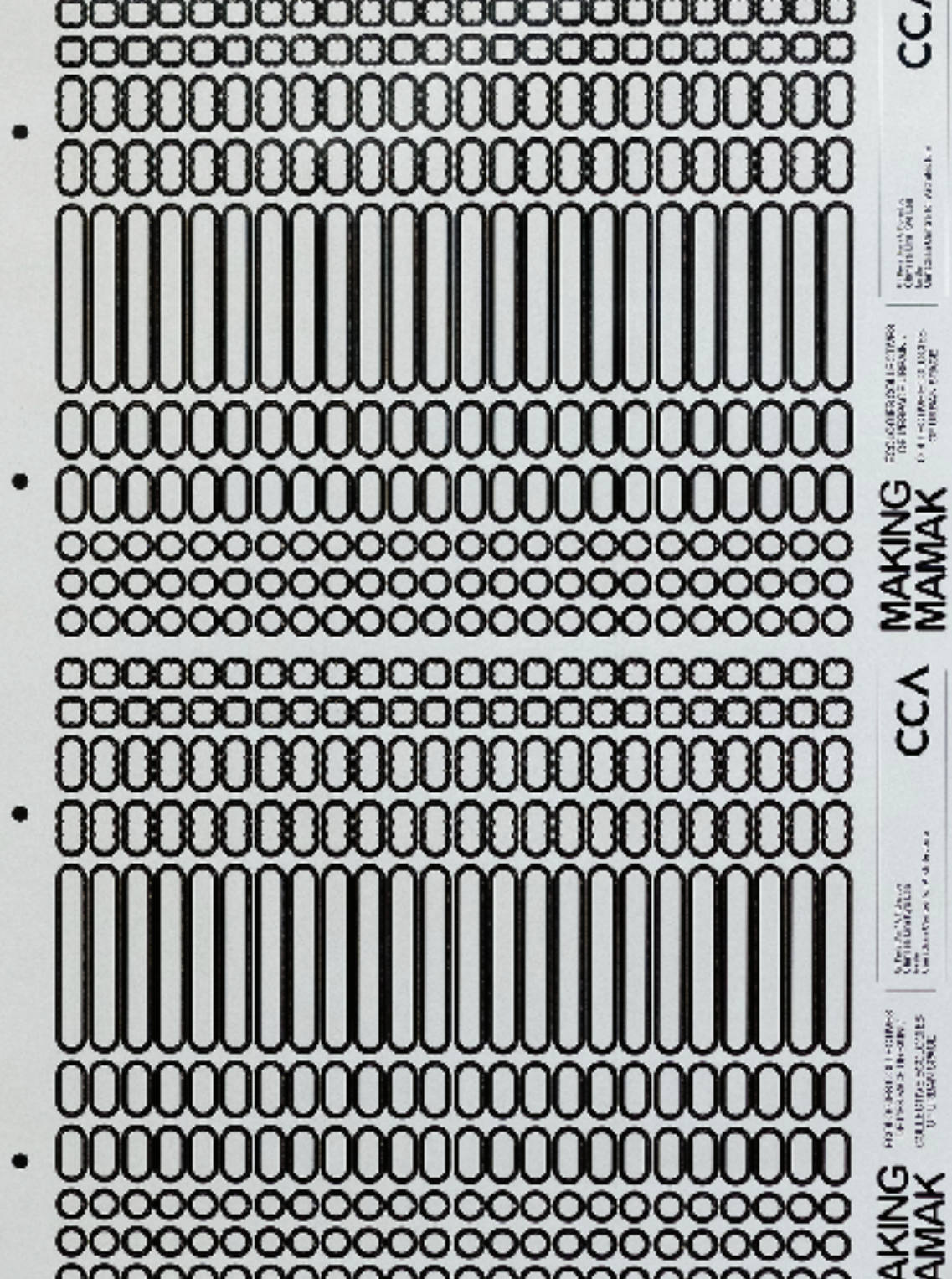
MAKING MAMAK

Appendice / Appendix

(20)

● Papan Haus

Diagramme du collectif /
Collective Diagram

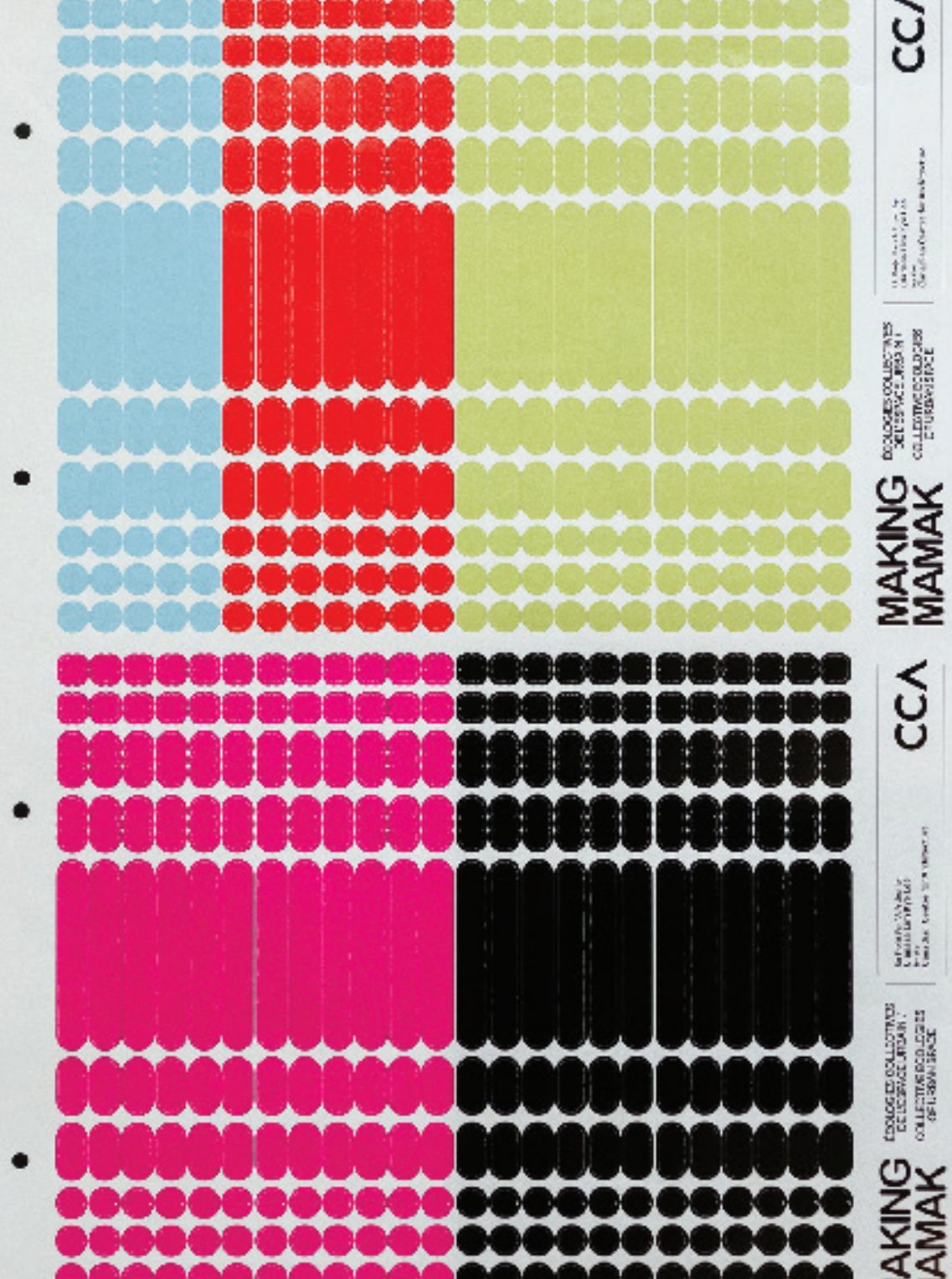


MAKING MAMAK

Appendice / Appendix

(21)

● Collection d'autocollants
(noir et blanc) /
Sticker Pack
(Black & White)



MAKING MAMAK

Appendice / Appendix

(22)



Collection d'autocollants
(Couleur) /
Sticker Pack
(Colour)

MAKING MAMAK

Écologies collectives
de l'espace urbain /
Collective Ecologies
of Urban Spaces

Section 8:
Appendice / Appendix

CCA

Centre Canadian d'Architecture /
Canadian Centre for Architecture
1920, rue Baile
Montréal, Quebec
H3H 2S6
Canada

www.cca.qc.ca

Projet de / project by
Clarissa Lim Kye Lee

Commissaire émergente 2022-2023 /
2022-2023 Emerging Curator
cca.qc.ca/makingmamak

Conception par / Design by
Constant/Variable

Imprimé en / Printed in
Malaysia, 2024

© CCA