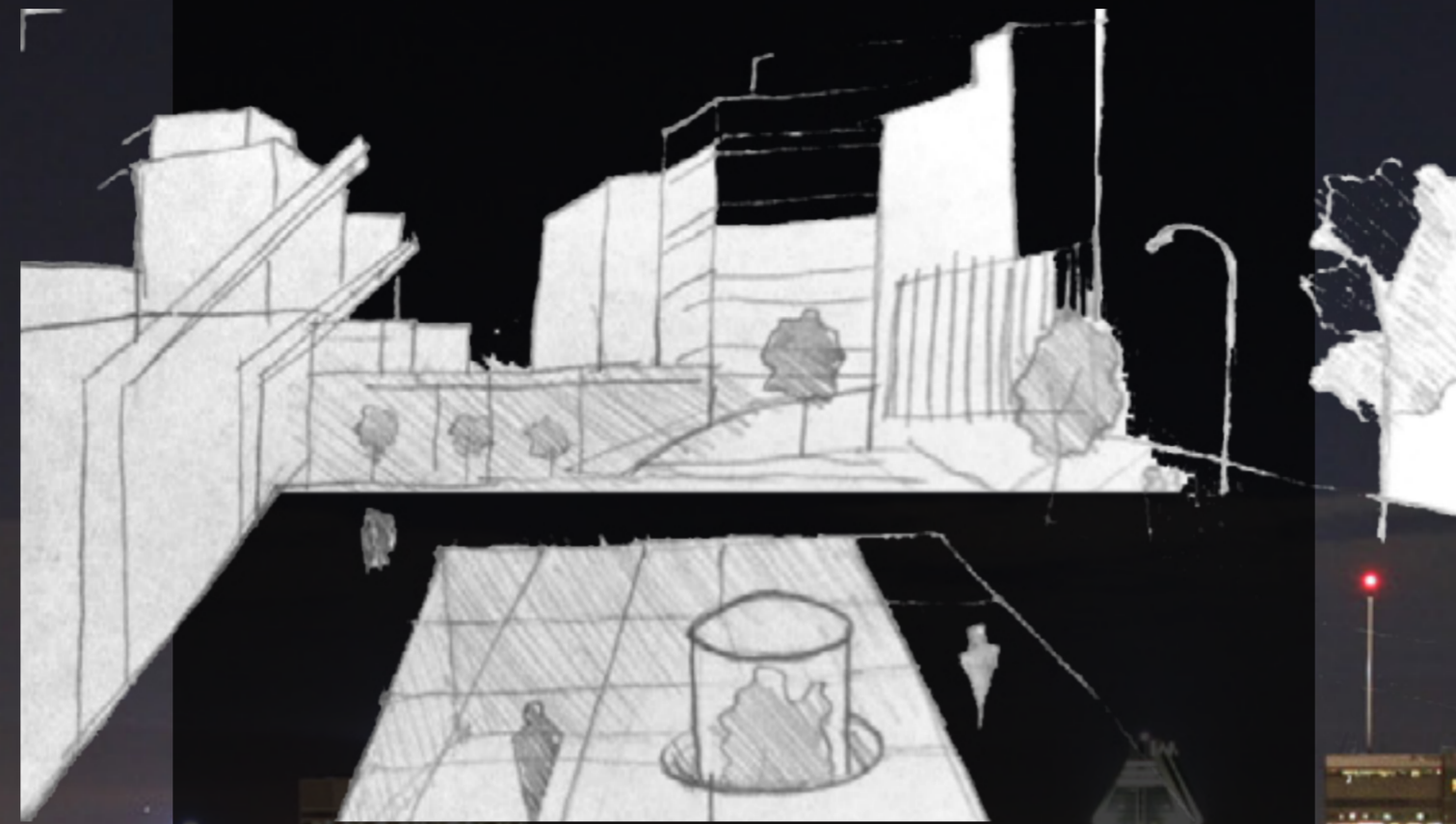
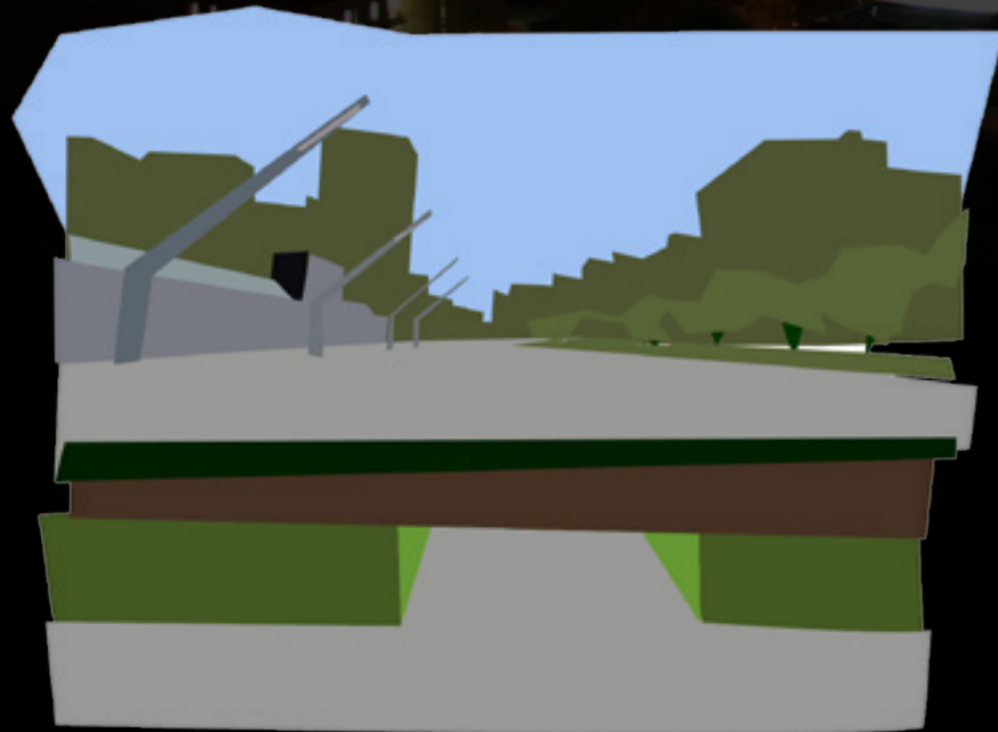
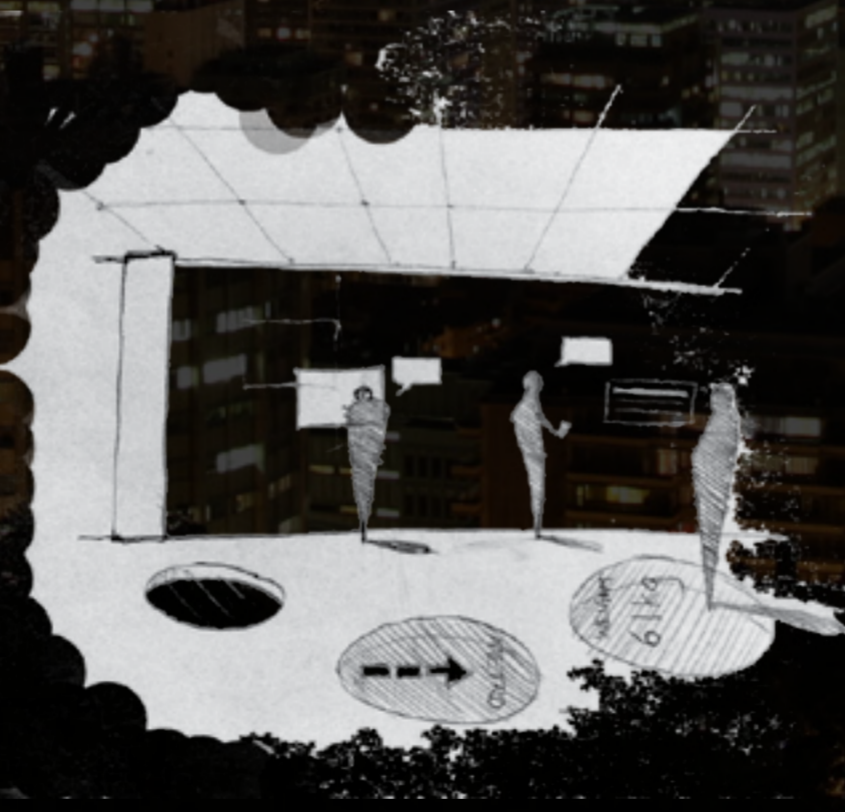


SUB-CITY

Montreal, with its frigid winter and piling snow, has the world-renowned subterranean connecting systems, which provide the citizens with comfort and warmth even under extreme climate. In the futuristic world 50 years from now, Montreal will have expanded its colony underground, and mirrored what is above in the sub-city. Our vision of the sub-city is a place where people re-define themselves through the simulation of the ground level, and the ever-updating information technology. Although they are under the ground level, the interactive social and environmental tracing on walls, the simultaneous traffic report on the floor, and the parallel weather imitation controlling the overall atmosphere will constantly remind people where they are, and allow them to carry their daily routine. By that time, the sub-city will have become the major interactive social space where people gather and explore the new technology with each other, and the combination of natural skylights and artificial lighting make the place airy and spacious. Also, the conspicuous green tubes penetrate all the sub-floors and grow into the ground, incorporating the natural elements in this man-made world and creating potential for urban planting; the shrubs and vegetation scattered around the underground will lead people into an urban forest, where they can enjoy the peace and greenery otherwise extremely rare in the downtown area. The increasing population, bipolar weather condition, and environmental pollution, call for a sub-city which can provide Montreal and its citizens more living space, convenience and comfort, and a more integrated life-styles with technology and nature.



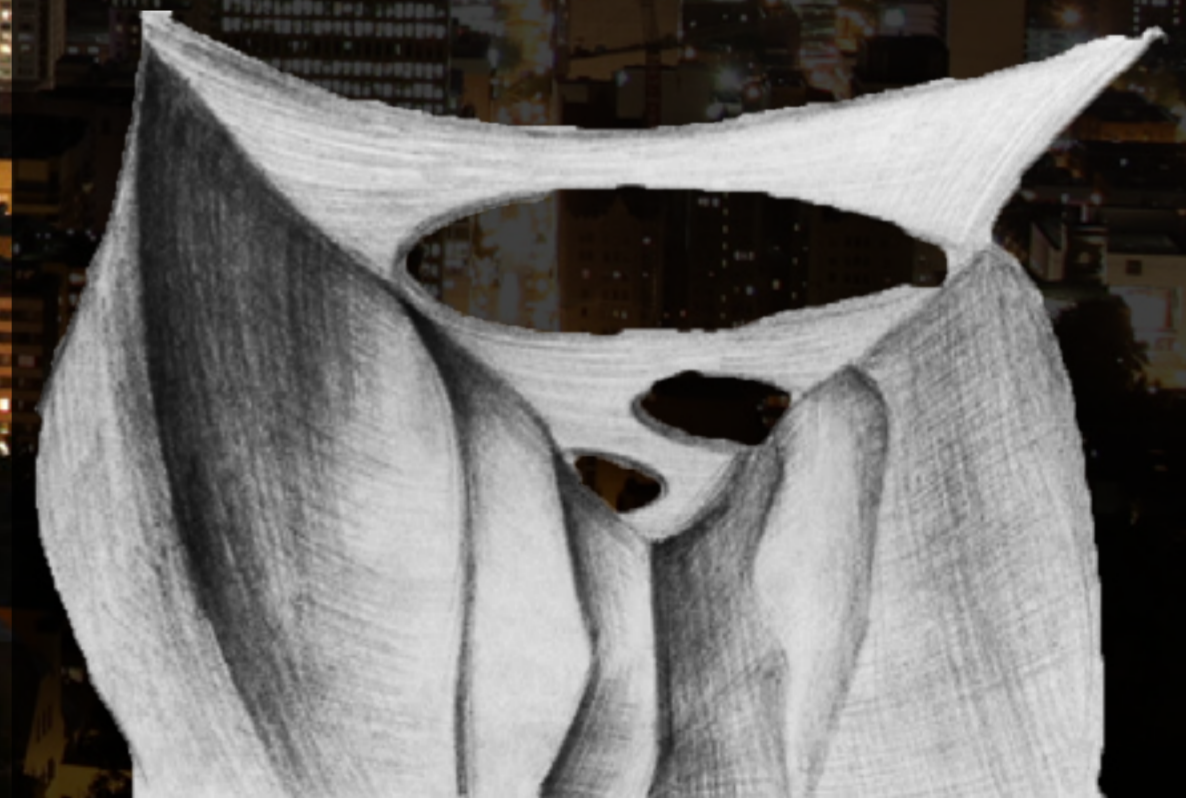
Exterior view



Interior ambiance



Interactive Floor



Interior skylight

