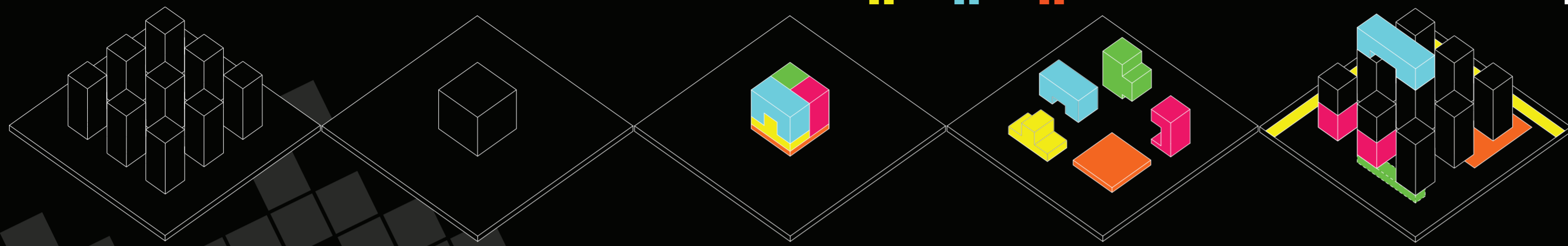


THINK OUTSIDE THE BUILDINGS



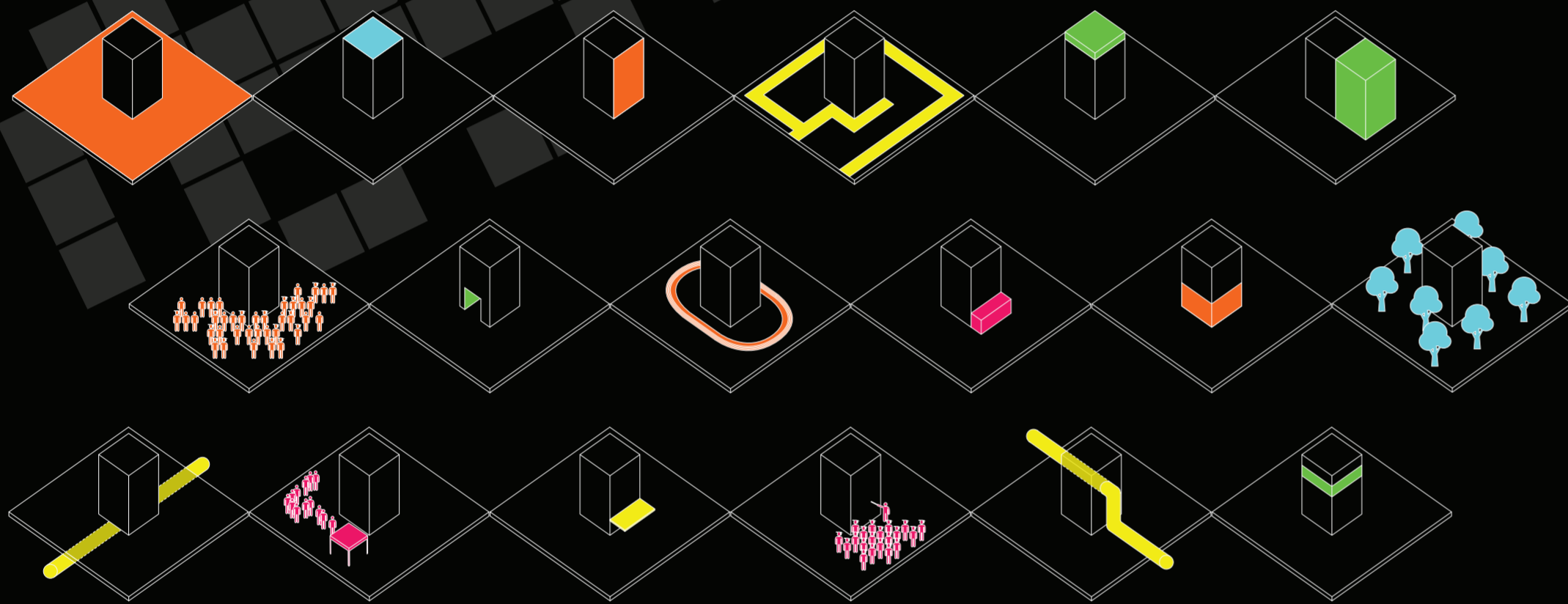
HOW WE SEE OUR CITY

HOW WE SEE A UNIVERSITY

HOW IT REALLY IS

HOW IT SHOULD BE

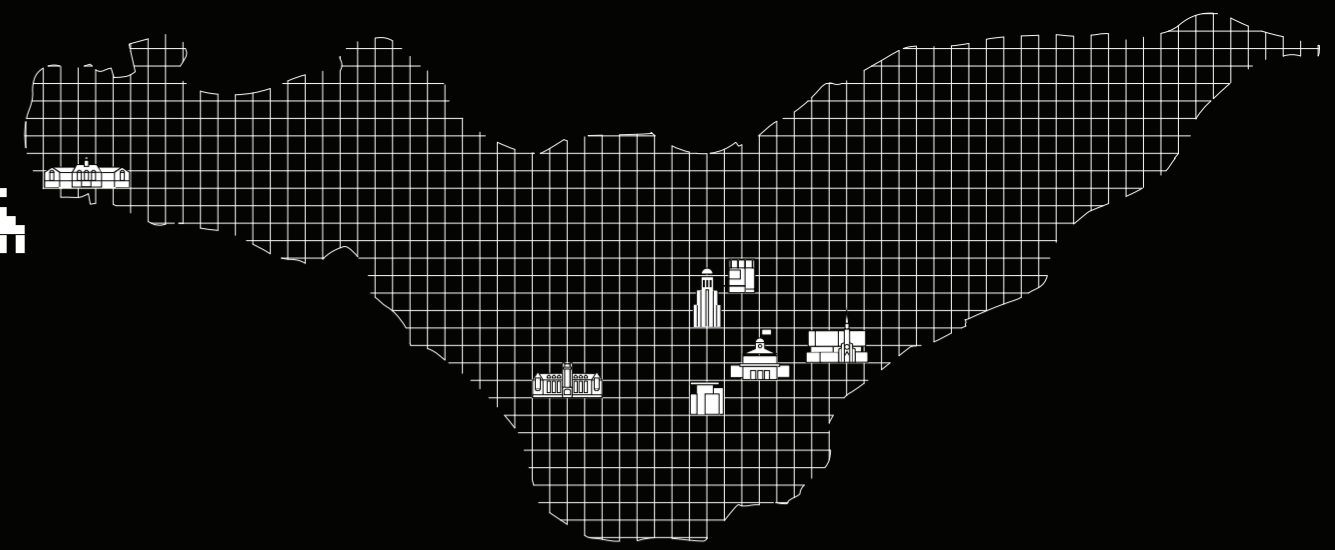
HOW OUR CITY SHOULD BE



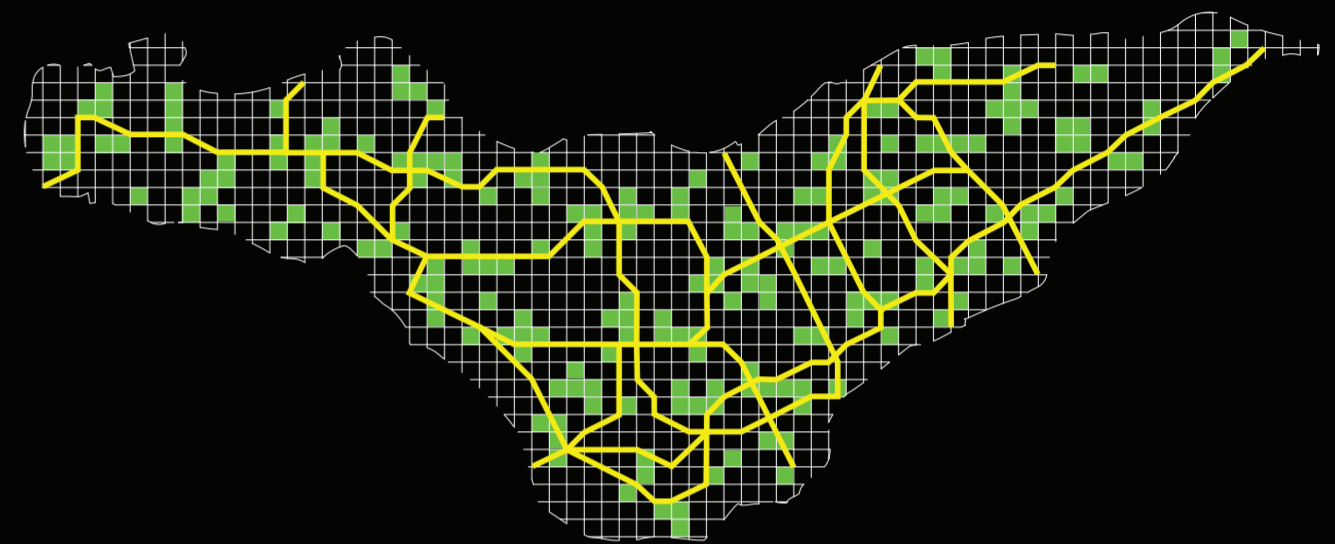
SYMBIOTIC CAMPUS AND CITY BUILT ENVIRONMENTS (S.C.C.B.E.)

- LEGEND -

TRANSPORTATION	
ECOLOGY	
ECONOMY	
SOCIAL	
POLITICAL	
CULTURAL	
TYPICAL STUDENT	
MODEL CITIZEN	



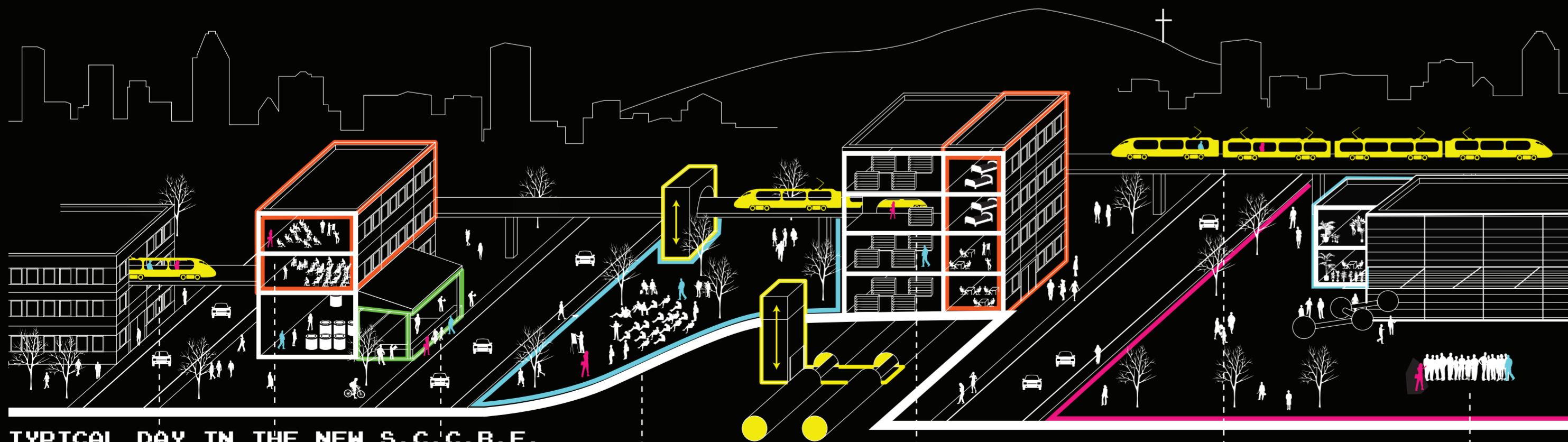
MONTREAL AND ITS 4 MAJOR UNIVERSITIES



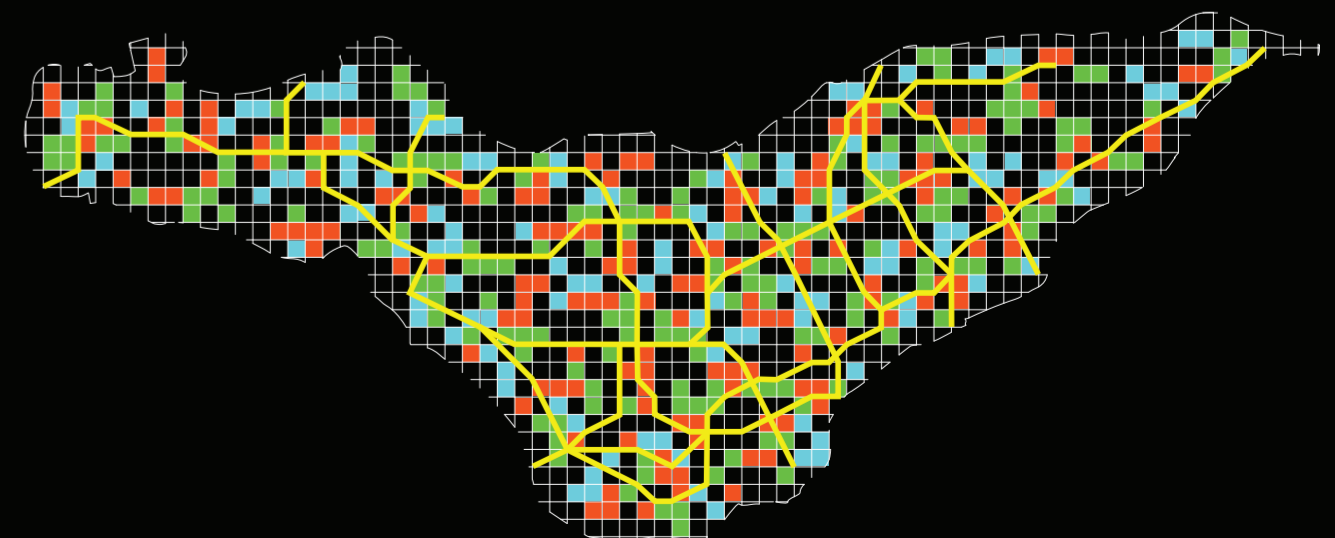
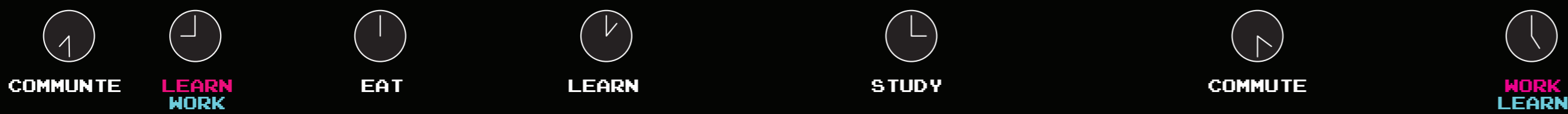
TRANSPORT AND ECONOMICAL IMPACT



SOCIAL AND ECOLOGICAL POTENTIALS



TYPICAL DAY IN THE NEW S.C.C.B.E.



KNOWLEDGE-BASED GROWTH



MONTREAL HAS 4 WORLD-CLASS UNIVERSITIES IN ITS URBAN CENTER (A PARTICULARITY IN NORTH AMERICA) ALONGSIDE INNOVATIVE INDUSTRIES AND EXCELLENT LIVING CONDITIONS. THE ROLE OF THESE UNIVERSITIES CAN BE MUTUAL CATALYSTS IN UNLOCKING THE CONTEMPORARY POTENTIALS OF MONTREAL AS KNOWLEDGE BASED SOCIETY.

THE PROPOSITION INVESTIGATES A PLETHORA OF PLAYFUL STRATEGIES. IT UTILISES THE ENTIRE CITY, TRANSFORMING IT INTO A NEW URBAN LANDSCAPE OF THE CAMPUS. BY ELIMINATING BOUNDARIES BETWEEN UNIVERSITIES IT PROMOTES COOPERATION. IT TARGETS PRE-EXISTING COMPOSITIONS AND RELATIONS OF MONTREAL (PEOPLE, TRANSPORT, INFRASTRUCTURE), WASTING LESS SPACE AND COST. THESE HIGHLY BENEFICIAL PARASITES ARE STRATEGICALLY LOCATED TO CONSOLIDATE SPECIFIC, COHESIVE, COHERENT AND COLLECTIVE INTELLIGENCE OF THE STUDENTS' NEEDS AND CITIZENS' ENDEAVOURS. THEY SUPPORT MUTUALLY EDUCATIONAL, ECONOMICAL, SOCIAL, ECOLOGICAL, POLITICAL AND CULTURAL GROWTH IMPACTS ACROSS THE CITY.

INSTEAD OF A SINGLE LARGE DEVELOPMENT, THEY RANGE FROM COOPERATION BETWEEN UNIVERSITIES, SCALE AND TIME BY MANIPULATED ADDITIONS, DEMOLITIONS AND RENOVATIONS. HENCE, THEY ALTER THE CITY THROUGH HYBRIDIZATIONS AND INFRASTRUCTURAL LANDSCAPES. LIKE OLD VIDEO GAMES, IT IS A CONSTRUCTION OF A PLACE WITH INFINITE POSSIBILITIES FOR EXPRESSION AND INTERACTION. THE STUDENTS AS WELL AS THE POPULATION USE THESE SHARED SYMBIOTIC BUILT ENVIRONMENTS. THEY ARE LEARNING TOOLS AND METHODS BOTH THEORETICAL AND PRACTICAL CAREFULLY ORCHESTRATED BASED ON THE CITY'S INTRINSIC VALUE. SUCH CHARACTERISTICS OF MONTREAL MAY BE ITS INTELLECTUAL PROPERTY IN THE ARTS, CULTURE, ENGINEERING, TECHNOLOGY AND LIFE SCIENCES.

TO ILLUSTRATE THIS, ONE TYPICAL MONTREAL STUDENT IS AN ARTS UNDERGRADUATE. ALWAYS ON THE MOVE AND INTERTWINING WITH THE CITIZENS, THE STUDENT WILL BE ABLE TO DISCUSS IN HIP INFORMAL SPACES, MEET PROFESSIONALS IN STUDIO GALLERIES AND PUT HIS KNOWLEDGE IN PRACTICE AT A RELATED

PART TIME WORK DUE TO THE CITY AND THE NEW LOGISTIC URBANITY, ARTIFICIAL ECOLOGY, EARTH AND ROOF WORKS ADDED, THE STUDENTS' ACTIONS CREATE UNEXPECTED, SURPRISING SITUATIONS DEALING WITH ISSUES OF THE CITY.

IN ALL, THE DIVERSE SYMBIOTIC INTRUSIONS PROLIFERATES KNOWLEDGE WITHIN MONTREAL, ENABLING THE POPULATION WITHIN A LARGER SCALE OF TERRITORY AND BEYOND THE CITY TO THRIVE IN A MUCH BROADER CONTEXT.

PROFESSOR X.

