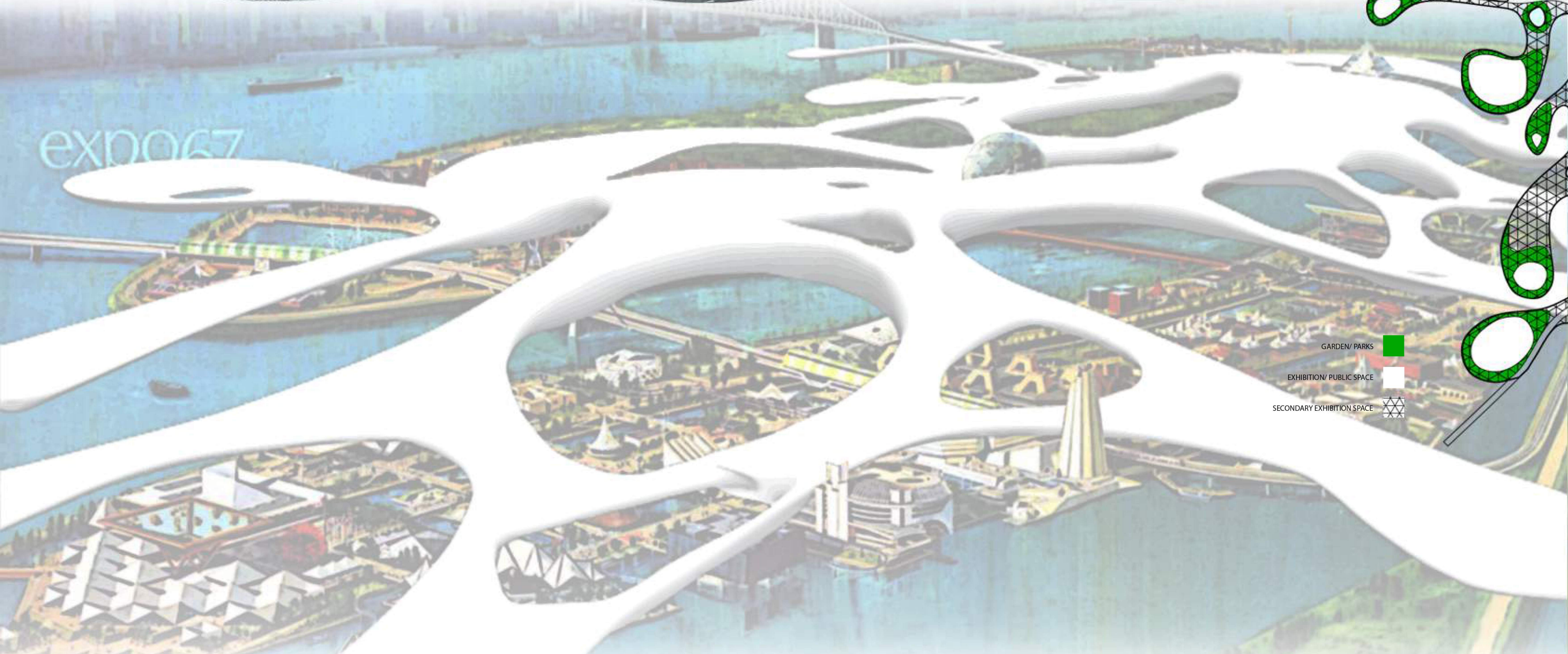


expo67



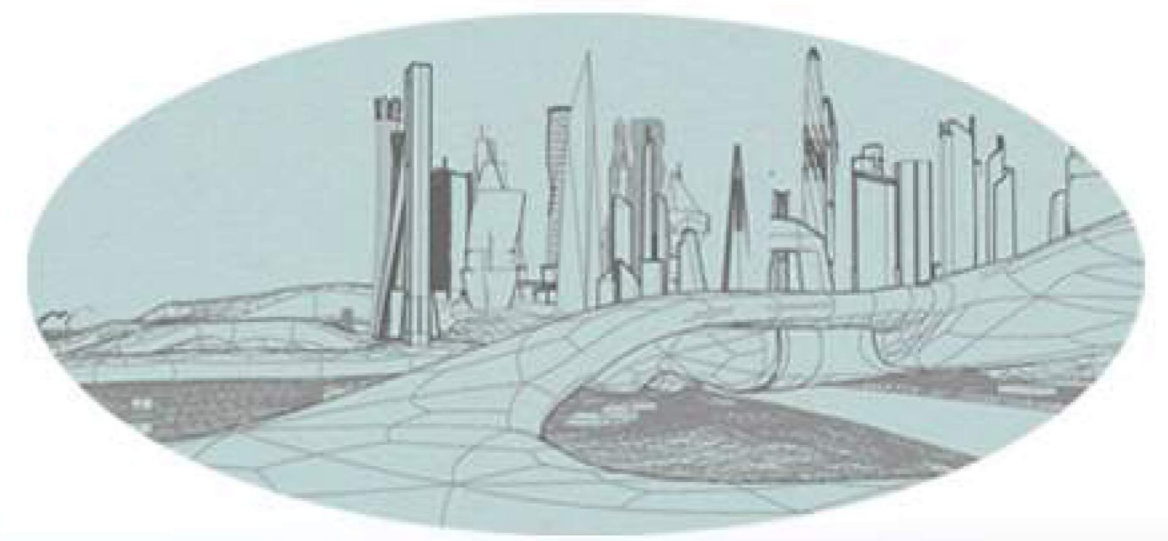
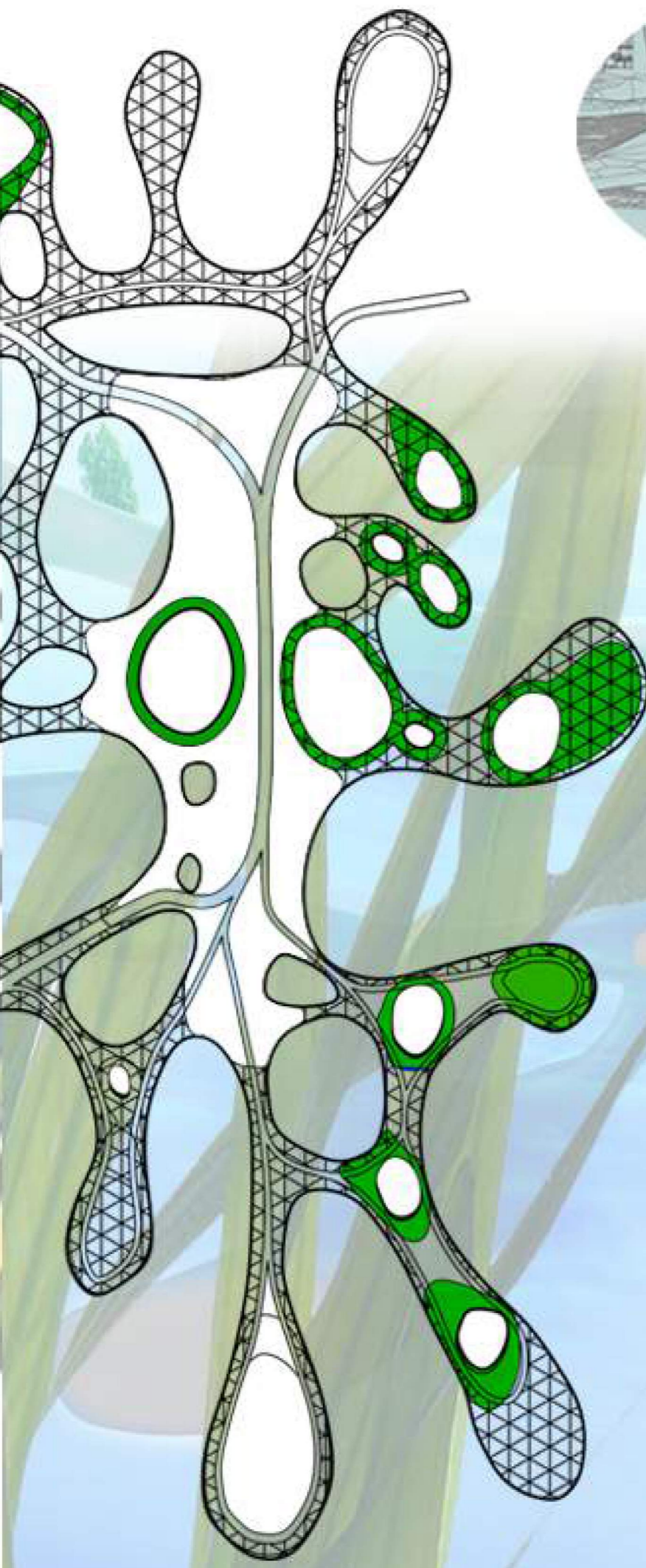
- GARDEN/ PARKS 
- EXHIBITION/ PUBLIC SPACE 
- SECONDARY EXHIBITION SPACE 

PRE FLOOD (PRESENT)

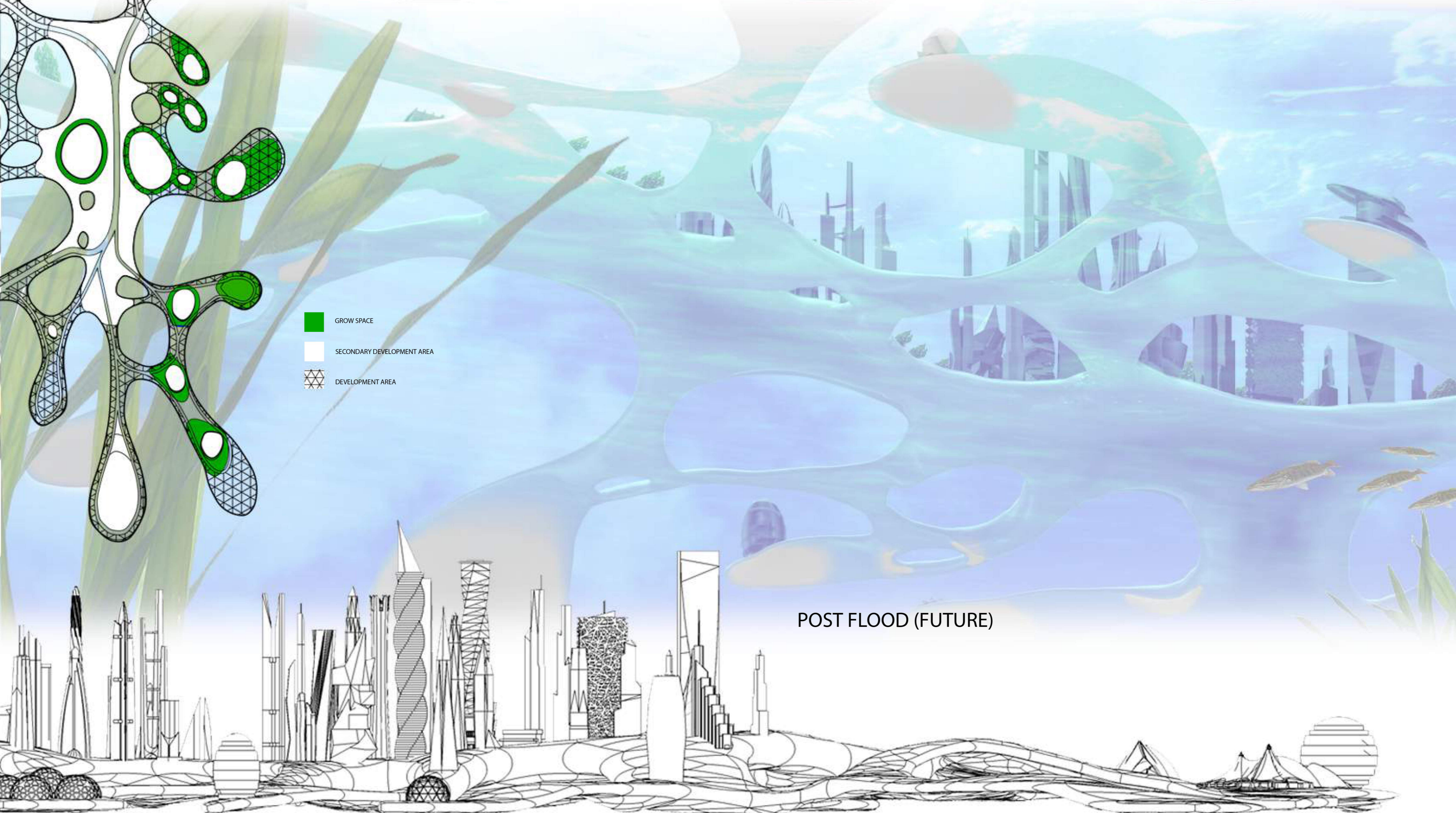
THE ARC

A vessel for Refuge... If water levels rise due unforeseen circumstances! The proposal imagines that the activity of exposition at the Ile-Sainte Hélène and Ile Notre Dame never ceased since Expo 1967, and that these islands have performed uninterruptedly as a continuous active exposition site. As the fictional site for the accumulation of insertions of architectural pavilions, the archipelago has run out of sites and therefore must expand. The Arc proposes, in 2017, a multi-tentacular platform that produces supplementary exhibitions sites while connecting the two islands. For a time, the two islands and supplementary platform will behave as a completely integrated, continuous, land form. However, should water levels rise, the new platform – depicted here supporting a number of imagined new exposition pavilions, buildings and supportive services – would detach from the islands, and float above them on the new water level. In this sense, by 2067, the envisioned accumulation of new architecture constitute more than a mere "exposition playground." Rather, they offer the starting point for not only a new city, but for a new beginning . We come to understand, therefore, that the supplementary platform built in 2017 was, in the end, a subterfuge for refuge.





-  GROW SPACE
-  SECONDARY DEVELOPMENT AREA
-  DEVELOPMENT AREA



POST FLOOD (FUTURE)

