



I N F R A

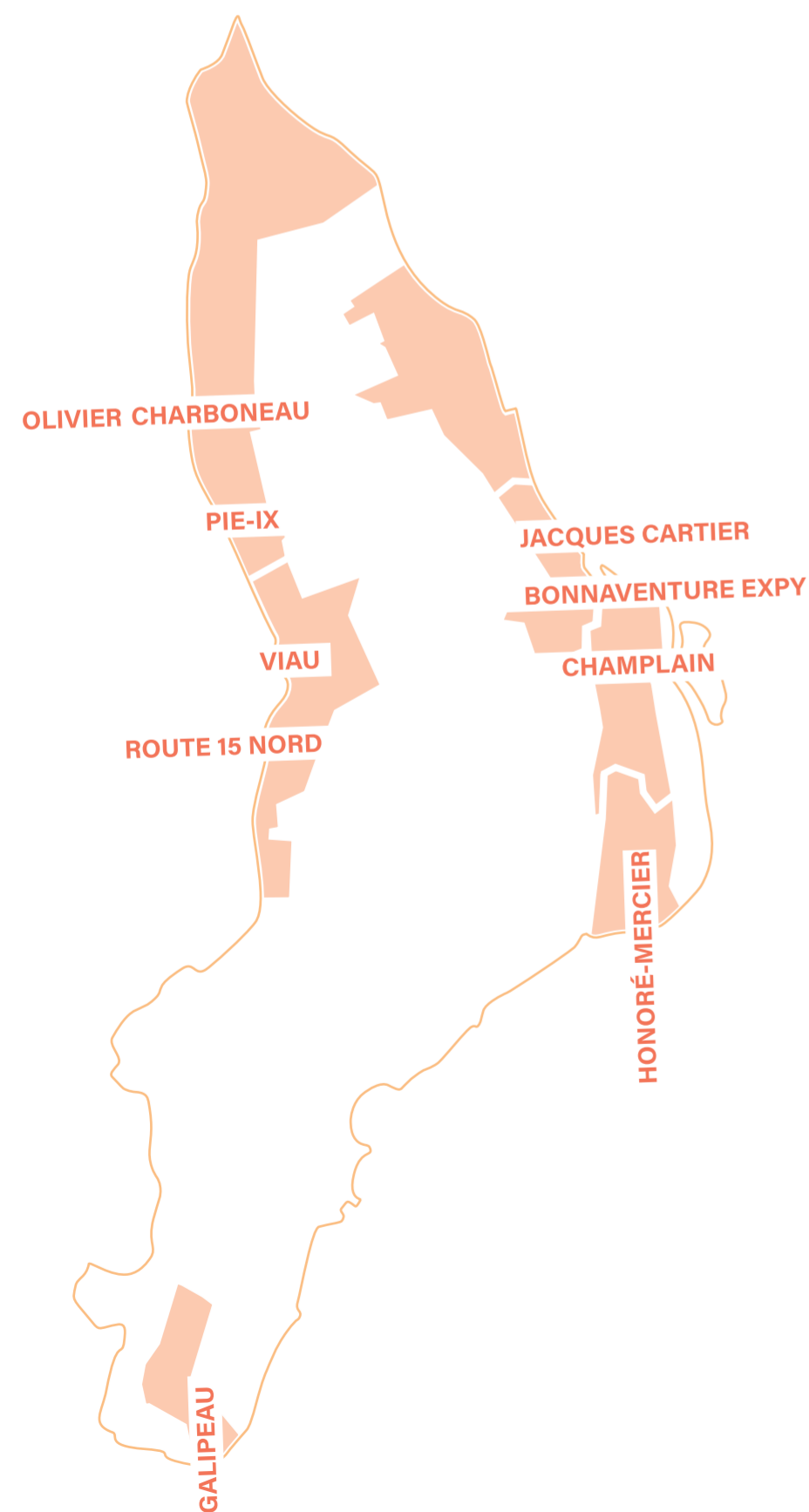


As large developments and city-run projects increasingly take over the city, the appropriation of public spaces by **communities** grows more difficult than ever. Montreal's alleyways have taught us how **bottom-up**, citizen-led initiatives can combat large-scale issues such as climate change in small, localized actions. Their unique nature is shown through three particular traits: the **appropriation** from local residents of an otherwise transitional space, the presence of **harmonious disorder**, and light/low-tech infrastructure.

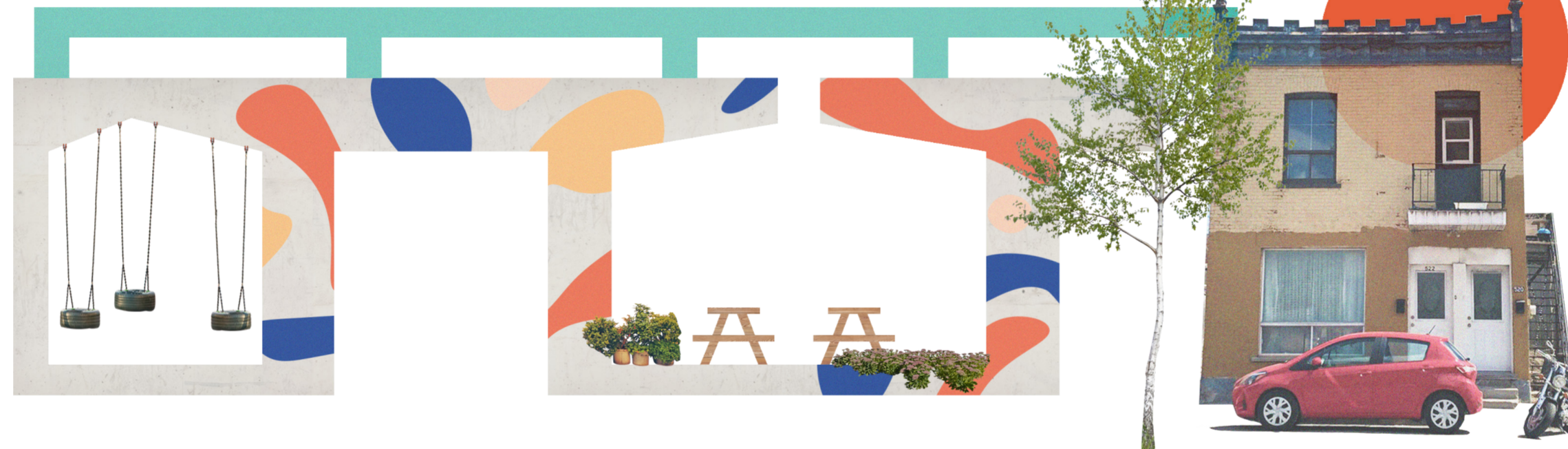
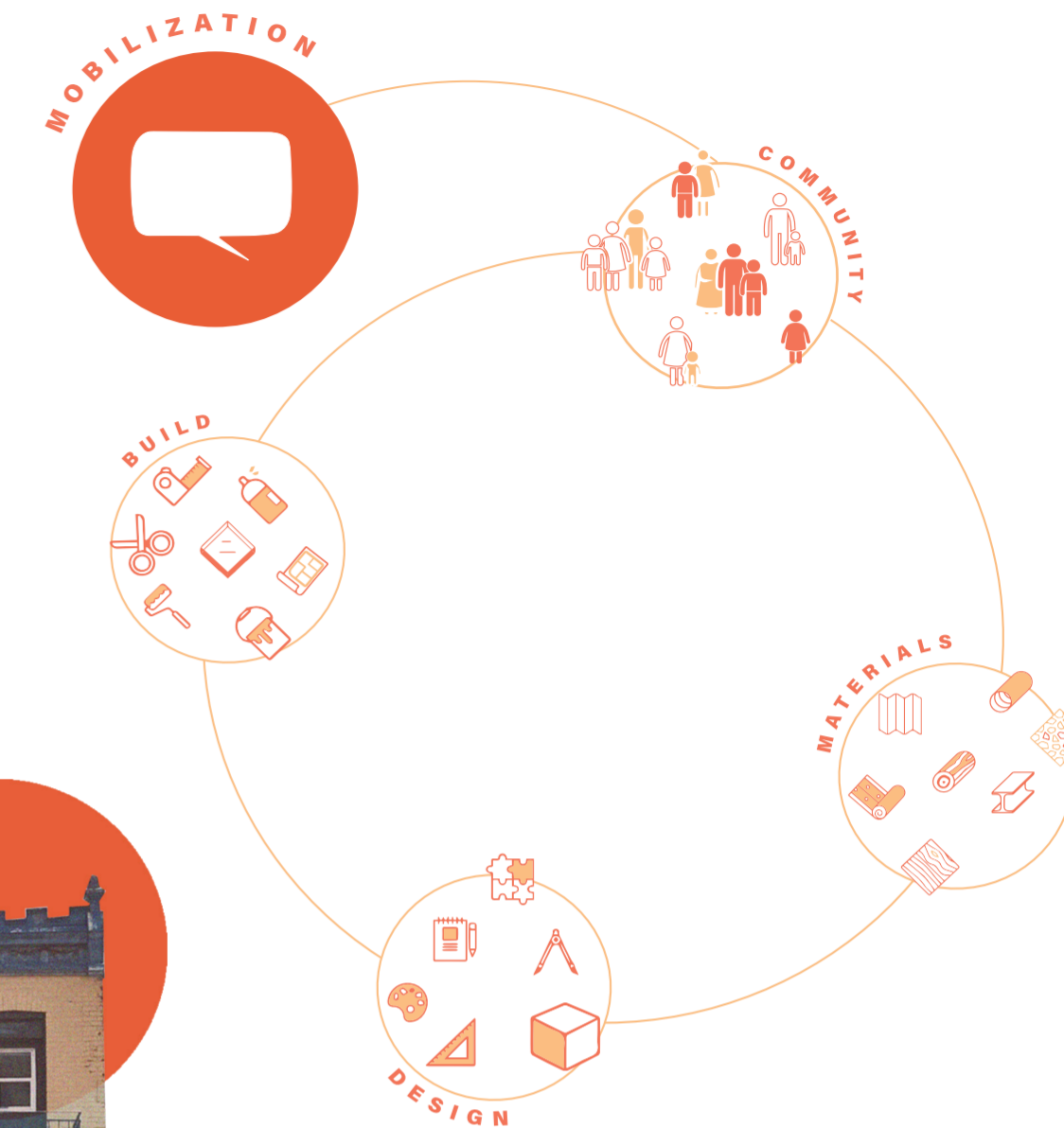
This proposal seeks to apply the philosophy of the *Ruelles Vertes* to another urban environment, both emblematic of Montreal and common to most major cities worldwide: the **underside of bridges**. Often forgotten, this public land provides spacious grounds for a wide variety of communal usages such as playgrounds, gardens or informal concerts. This project seeks to reinforce the social fabric of a neighbourhood, the **democratic** utilization of urban space, community self-reliance and waste management.



BONNAVENTURE EXPY



But how can such a space come to be? This proposal envisions a program that uses the concept of **creative reuse** as a means for activating a community within any given space. This program would be instigated by a collaboration between non-profit organizations, municipal governments and a design team. A **communication** plan would first be conceived, inviting local citizens to collect unused raw materials from their houses and backyard sheds that would otherwise be disposed of, i.e. planks of wood, old cabinets, chairs, bricks, coat hangers, etc. A material bank would thus be created, either on site or elsewhere. Designers would then facilitate charrette events in which the citizens would conceive their own urban furniture for the site with the donated materials. These projects would be signed off by the design team before being built, again, by the citizens themselves. This process would be recurring throughout the year until the community may repeat the cycle without the need of NPOs, governments or designers.

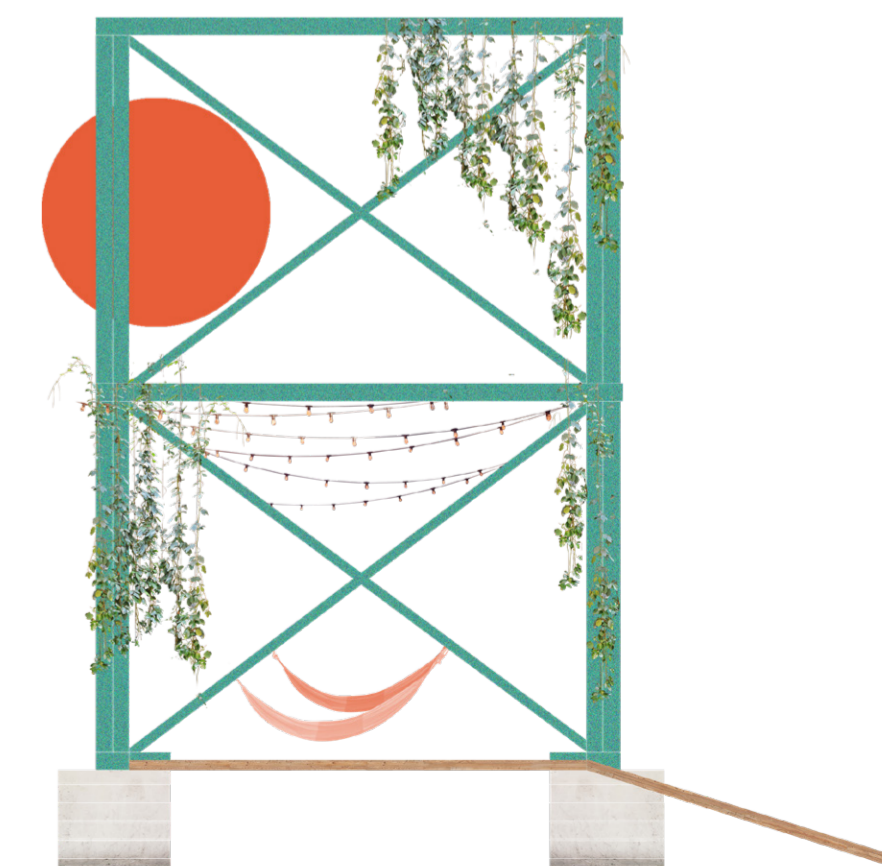


ROUTE LAURENTIENNE

Despite being an island, Montreal's urban layout drastically restricts any important relationship between citizens and the shoreline. Moreover, bridges are emblematic markers of the cityscape and have recently been subject to monumental projects such as yearly light shows. This project puts forward a reconnection between individuals and such gigantic pieces of infrastructure that are part of our cultural heritage.



OLIVIER CHARBONEAU



JACQUES CARTIER