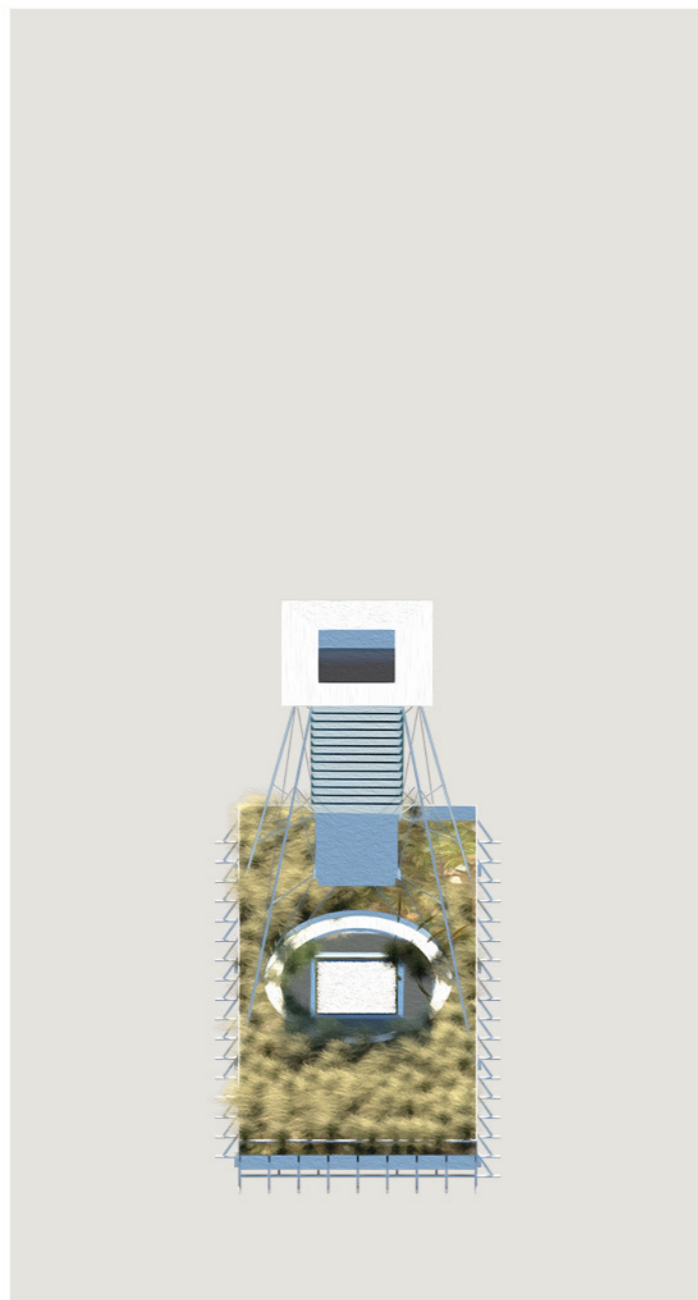


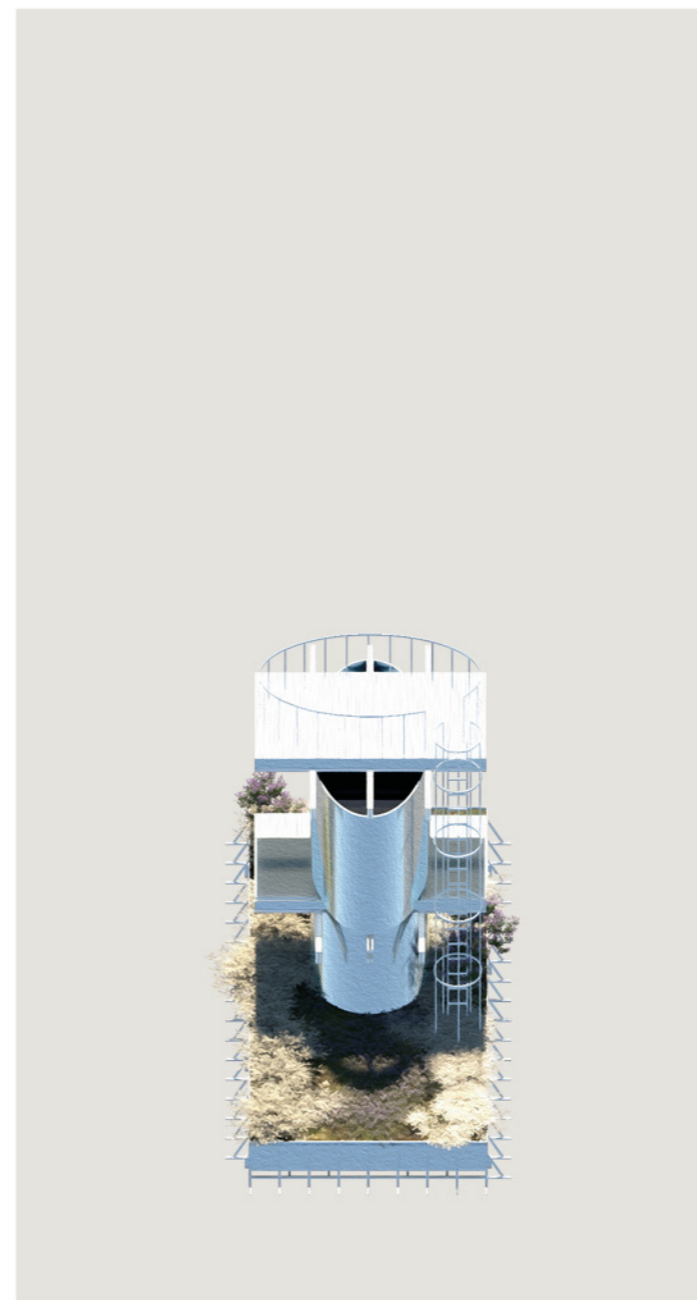
01. Well x Wild Garden
45° 32' 33" N, 70° 34' 23" O



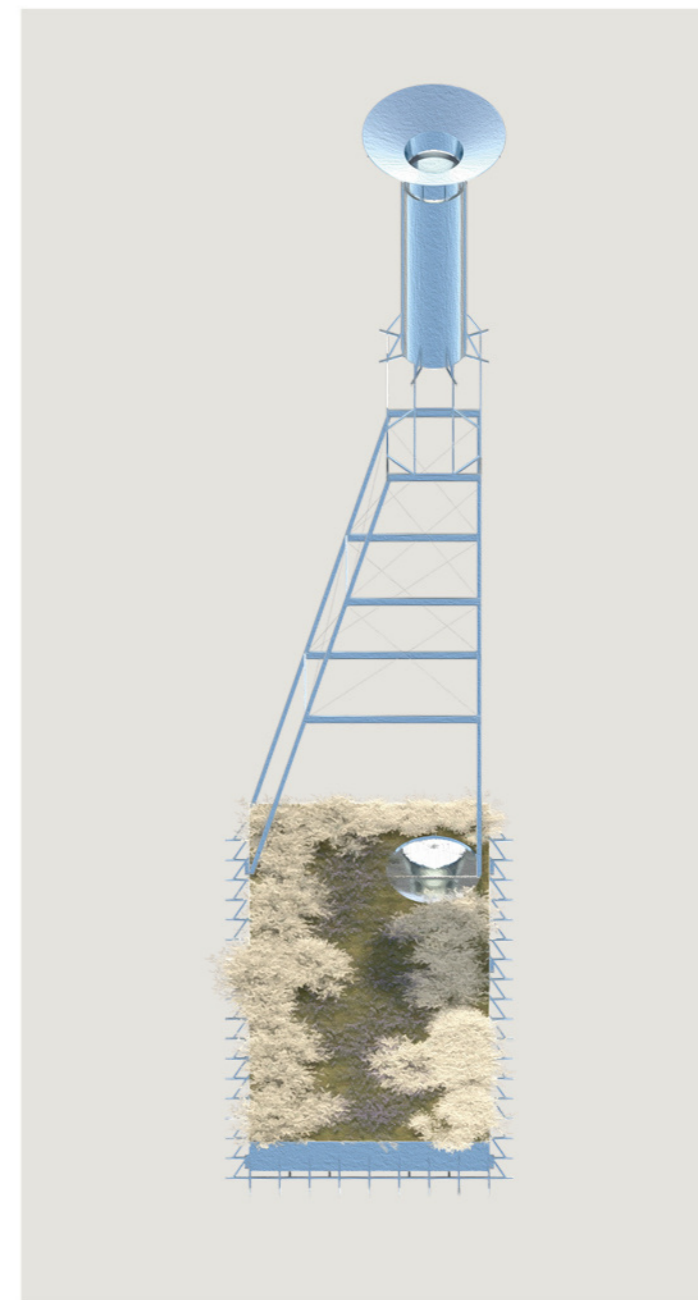
02. Fountain x Wetland
45° 25' 39" N, 73° 29' 23" O



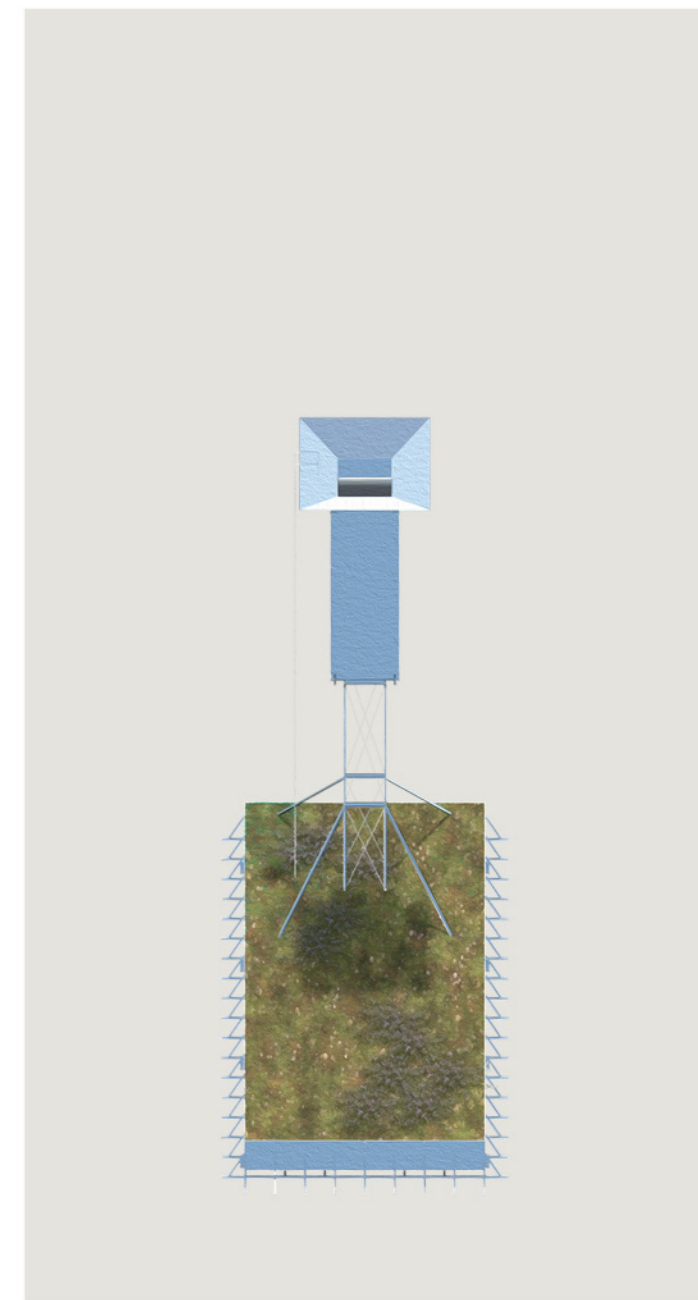
03. Well x Prairie
45° 27' 33" N, 73° 34' 23" O



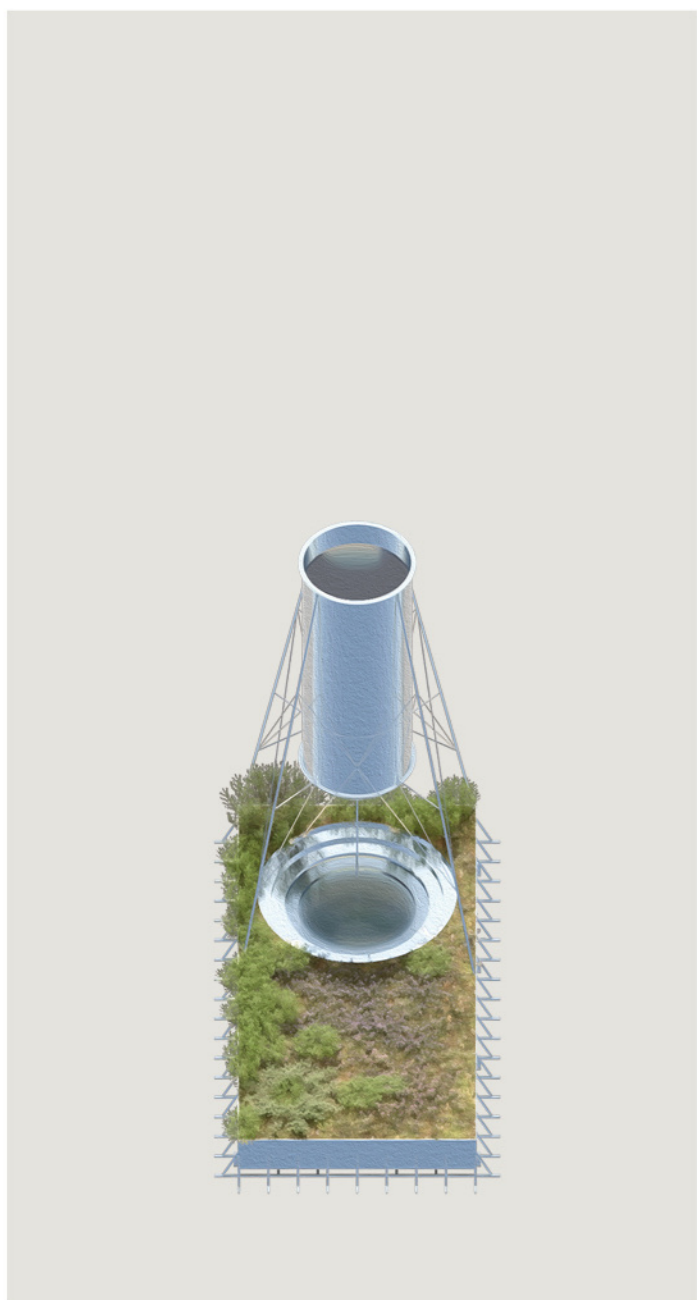
04. Observatory x Meadow
45° 27' 33" N, 73° 34' 23" O



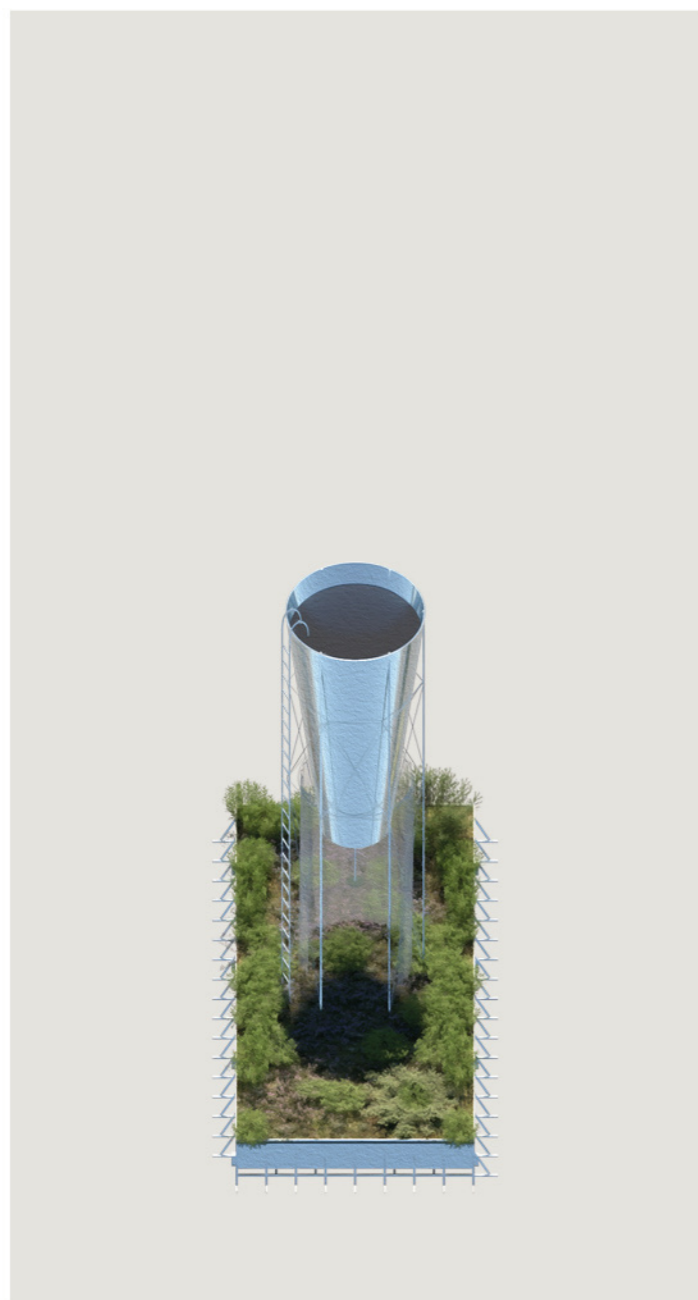
05. Waterfall x Meadow
45° 27' 33" N, 73° 34' 23" O



06. Waterfall x Flower Garden
45° 27' 33" N, 73° 34' 23" O



07. Bath x Pollinator Garden
45° 27' 33" N, 73° 34' 23" O



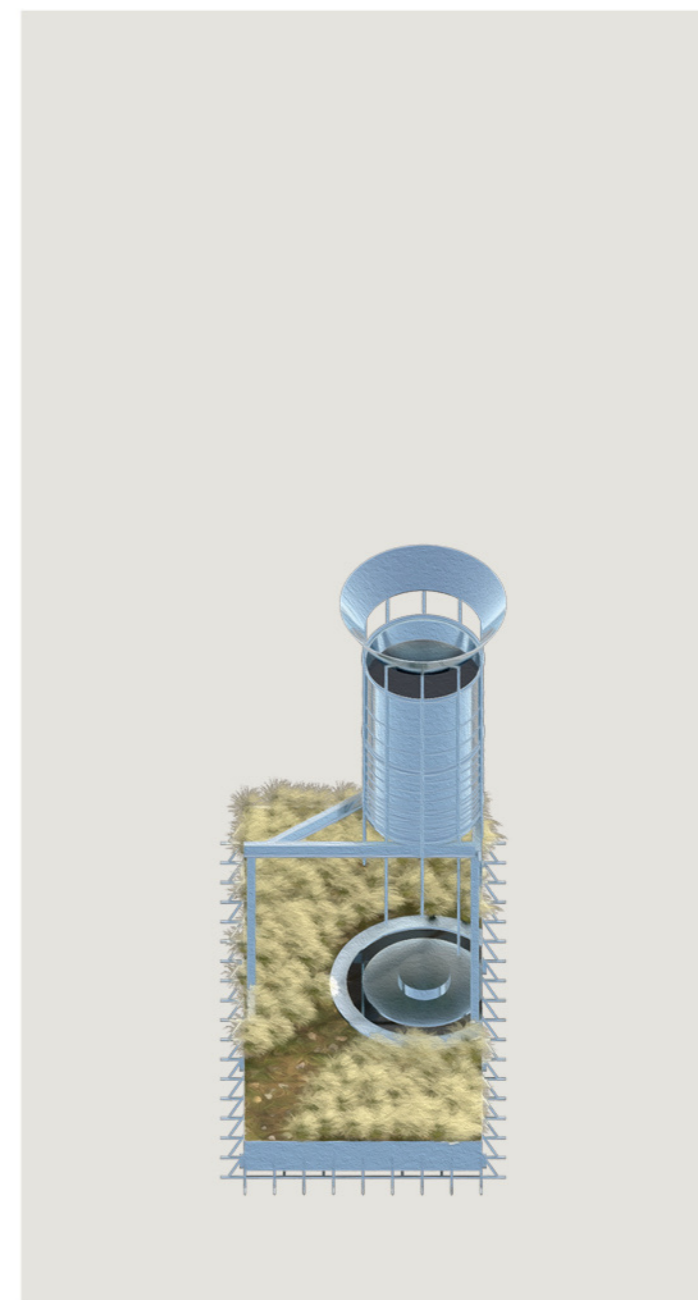
08. Shower x Shrubland
45° 27' 33" N, 73° 34' 23" O



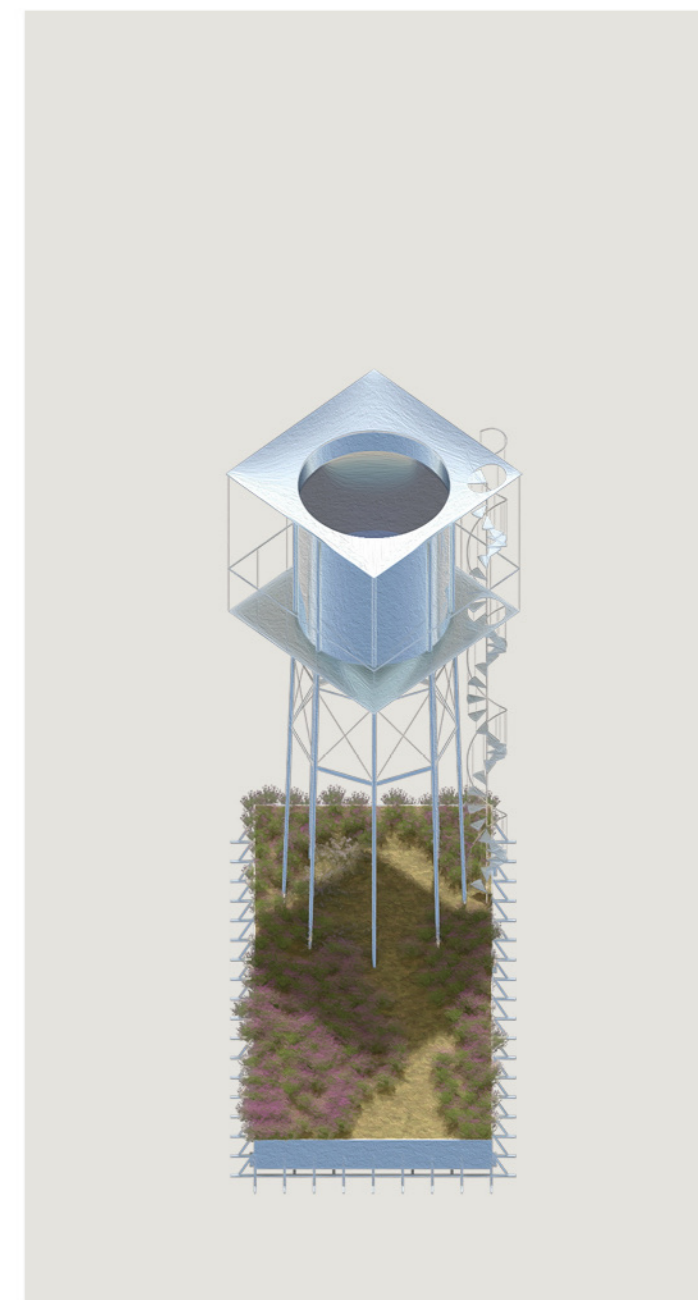
09. Shower x Pollinator Garden
45° 27' 33" N, 73° 34' 23" O



10. Mist x Shrubland
45° 27' 33" N, 73° 34' 23" O



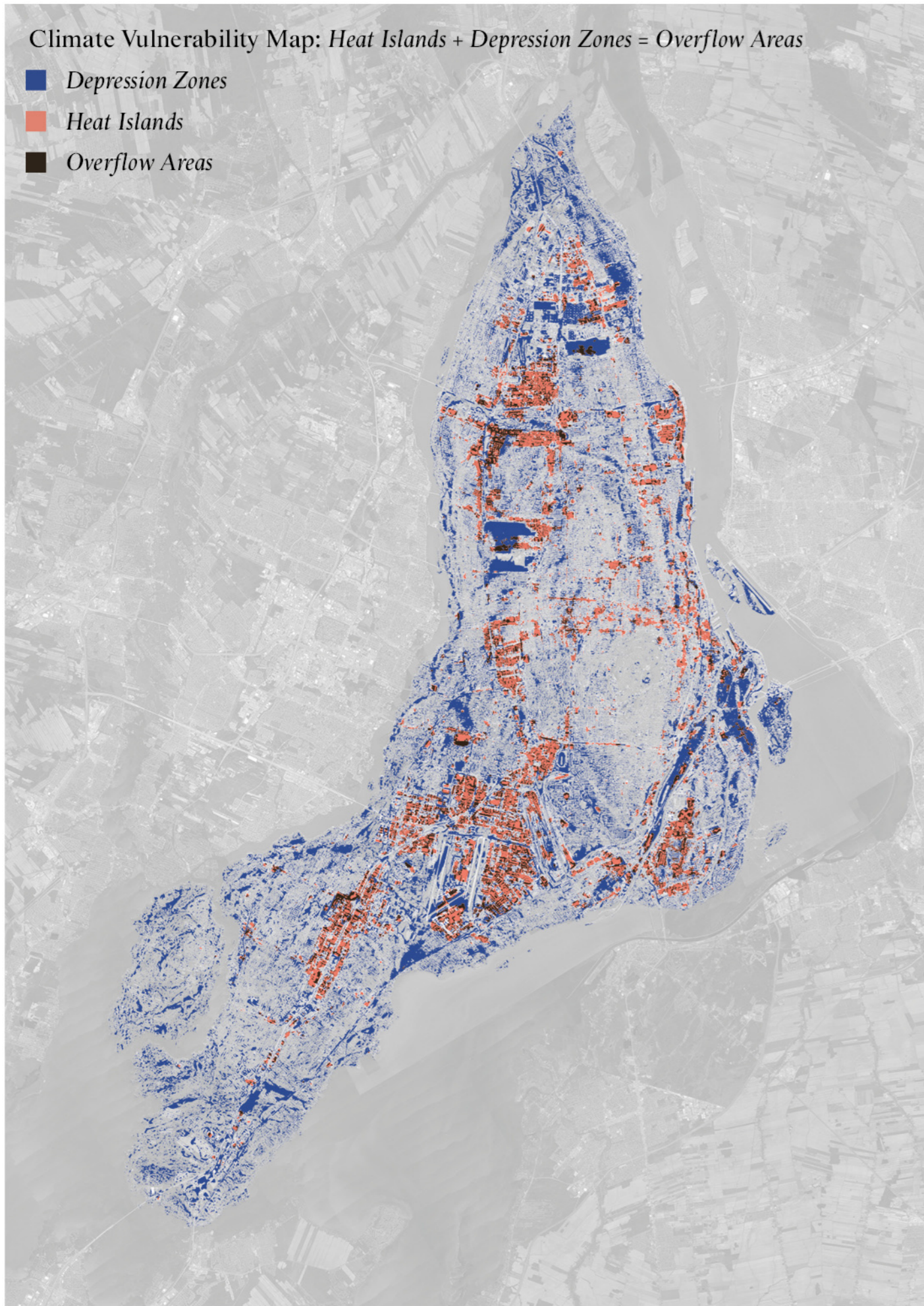
11. Mist x Prairie
45° 27' 33" N, 73° 34' 23" O



12. Bath x Wild Garden
45° 27' 33" N, 73° 34' 23" O

Climate Vulnerability Map: Heat Islands + Depression Zones = Overflow Areas

- Depression Zones
- Heat Islands
- Overflow Areas



Elevating Montreal's Horizon: A Watertower Renaissance proposes the integration of two reservoir typologies: the water tower (grey infrastructure) and sponge park (green infrastructure) to mitigate flood risks by collecting, storing, redistributing, and publicly activating stormwater. The design incorporates both the structural morphologies and the landscape of rain gardens, shaped by their new program. This relationship activates the roof and reimagines the skyline, introducing accessible and public spaces.

The city's water infrastructure stands as a testament to the dynamic relationship between human ingenuity and the natural environment. From an understanding of its historical and future development, this proposal aims at showcasing the potential significance of revitalized waterworks within the urban landscape. *A Watertower Renaissance* is premised on the notion that the city's water infrastructure offers the potential to profoundly influence the way people perceive and interact with the urban landscape. The project seeks to democratize knowledge and encourage public engagement with the city's ecological framework. It proposes nothing less than a paradigm shift: from mere functional elements to catalysts for an enhanced social experience and urban legibility. It seeks to confer upon Montreal's Watertowers the power of an icon, both experiential and symbolic. *Elevating Montreal's Horizon: A Watertower Renaissance* seeks to reinforce the city's identity by regaining a collective consciousness of water.

